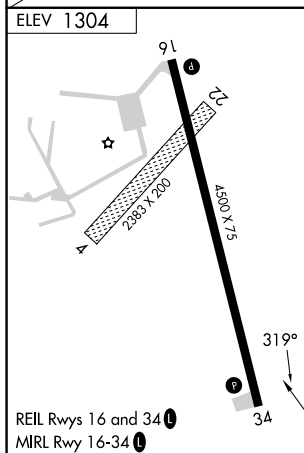
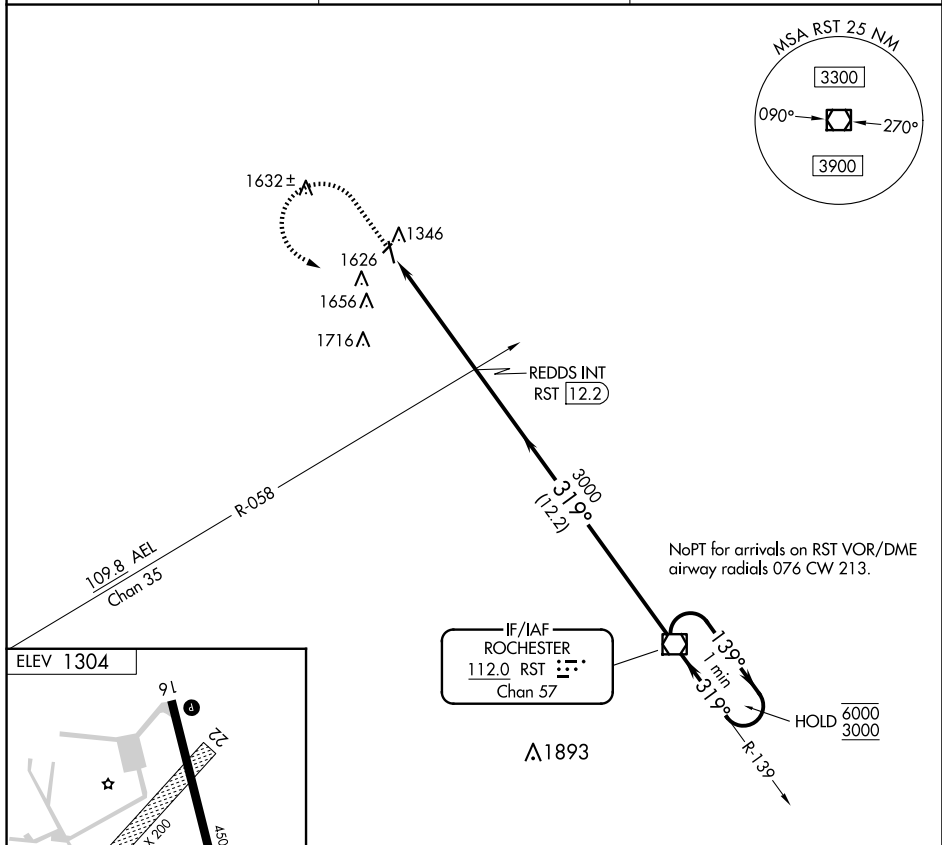


22363

VOR-A
DODGE CENTER (TOB)

MISSED APPROACH: Climb to 2500 then climbing left turn to 3000 on RST VOR/DME R-319 to RST VOR/DME and hold.

AWOS-3 119.075	ROCHESTER APP CON ★ 119.8 251.125	CTAF 122.9 0
--------------------------	---	------------------------



<div><div><div>2500</div><div>↑</div></div><div><div>3000</div><div><div>RST</div><div>R-319</div></div></div><div><div>RST</div><div><div></div><div></div></div></div></div> <div><div>REDDS INT</div><div>RST</div><div>12.2</div></div> <div><div>RST</div><div>VOR/DME</div></div> <div>One Minute Holding Pattern</div>					
<div><div><div><div>RST</div><div>17</div></div><div><div></div><div></div></div></div><div><div>3000</div><div>319°</div><div>139°</div><div>6000</div><div>3000</div><div>319°</div></div><div><div>4.8 NM</div><div>12.2 NM</div></div></div>					
CATEGORY	A		B	C	D
CIRCLING	1960-1 656 (700-1)		1960-1 ³ / ₄ 656 (700-1 ³ / ₄)	NA	

DODGE CENTER (TOB)
VOR-A

NC-1, 10 JUL 2025 to 07 AUG 2025