

WAAS CH 45633 W34A	APP CRS 344°	Rwy Idg TDZE Apt Elev	4500 1304 1304
--	------------------------	-----------------------------	---

RNAV (GPS) RWY 34

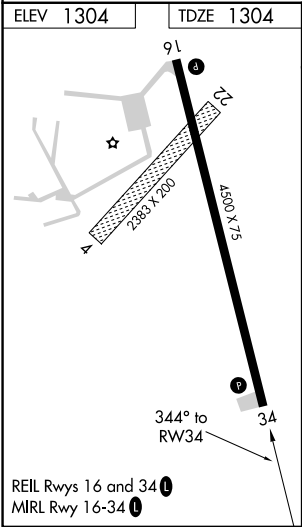
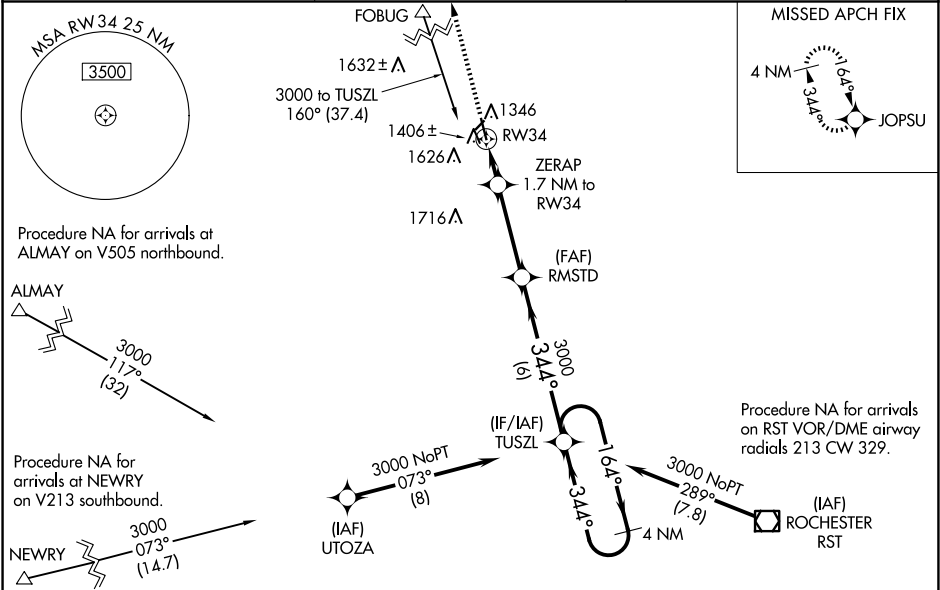
DODGE CENTER (TOB)

⚠

Baro-VNAV NA when using Rochester Intl altimeter setting. For uncompensated Baro-VNAV systems, LNAV/VNAV NA below -17°C (2°F) or above 54°C (130°F). DME/DME RNP-0.3 NA. When local altimeter setting not received, use Rochester Intl altimeter setting and increase all DA 39 feet and all MDA 40 feet, and increase LNAV Cat C visibility ½ mile and Circling Cat C visibility ¼ mile. Rwy 34 Straight-in and Circling minimums NA at night.

MISSED APPROACH: Climb to 3000 direct JOPSU and hold.

AWOS-3 119.075	ROCHESTER APP CON ★ 119.8 251.125	CTAF 122.9
--------------------------	---	----------------------



Δ 1893				
<div>3000 JOPSU</div> <div>* LNAV only. ZERAP 1.7 NM to RW34</div> <div>RW34</div> <div>1880*</div> <div>RMSTD 3000</div> <div>TUSZL 4 NM Holding Pattern</div> <div>344° 164° 3000</div> <div>GP 3.00° TCH 40</div> <div>1.7 NM 3.5 NM 6 NM</div>				
CATEGORY	A	B	C	D
LPV DA	1554-1	250 (300-1)		NA
LNAV/VNAV DA	1556-1	252 (300-1)		NA
LNAV MDA	1660-1	356 (400-1)		NA
CIRCLING	1960-1	656 (700-1)	1960-1¾ 656 (700-1¾)	NA