

WAAS CH 42931 W17A	APP CRS 174°	Rwy Idg 5003 TDZE 229 Apt Elev 229
--	------------------------	---

RNAV (GPS) RWY 17

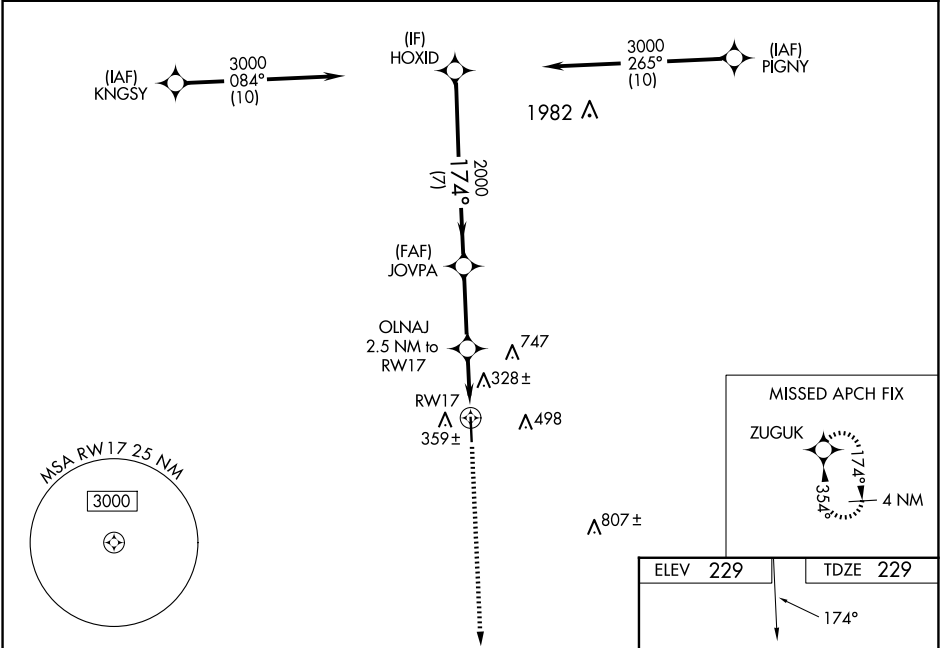
NAVASOTA MUNI (60R)

RNP APCH - GPS.

Rwy 17 helicopter visibility reduction below $\frac{3}{4}$ NA. Baro-VNAV and VDP NA when using 11R altimeter setting. For uncompensated Baro-VNAV systems, LNAV/VNAV NA below -15C or above 54C. When local altimeter setting not received, use 11R altimeter setting and increase LPV DA to 529 feet and all visibilities $\frac{1}{8}$ SM; increase LNAV/VNAV DA to 635 feet and all visibilities $\frac{1}{8}$ SM; increase all MDAs 60 feet and LNAV visibility Cat C and D $\frac{1}{8}$ SM.

MISSED APPROACH: Climb to 3000 direct ZUGUK and hold.

AWOS-3PT 120.925	HOUSTON APP CON 134.3 360.85	CTAF 122.9	123.3 0
----------------------------	--	----------------------	----------------



3000

ZUGUK

HOXID

JOVPA

OLNAJ

RW17

GP 3.00°

TCH 45

2000

1060

7 NM

3 NM

1.5 NM

1 NM

CATEGORY	A	B	C	D
LPV DA		479-1	250 (300-1)	
LNAV/VNAV DA		585-1	356 (400-1)	
LNAV MDA		580-1	351 (400-1)	

ELEV 229

TDZE 229

174°

5003 X 75

0.7% UP

35

REIL Rwy 17 and 35

MIRL Rwy 17-35 0