

HOUSTON, TEXAS

AL-6575 (FAA)

23222

WAAS CH 81903 W27A	APP CRS 269°	Rwy Idg TDZE Apt Elev	5002 67 68
--	------------------------	-----------------------------	---------------------------------------

RNAV (GPS) RWY 27
HOUSTON/SOUTHWEST (AXH)

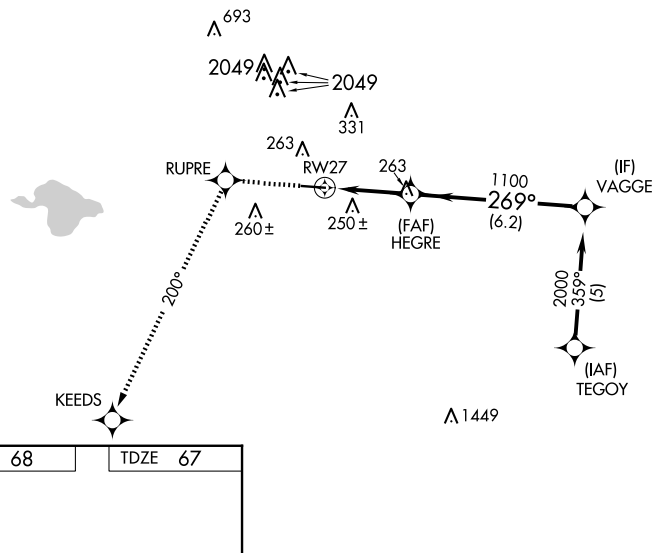
RNP APCH.

V For uncompensated Baro-VNAV systems, LNAV/VNAV NA below -15°C (5°F) or above 54°C (130°F). Rwy 27 helicopter visibility reduction below 3/4 SM NA. Obtain local altimeter setting on CTAF; when not received use William P. Hobby altimeter setting and increase all DAs/MDAs 40 feet, and LPV, LNAV Cat C visibility 1/4 mile. Baro-VNAV NA when using William P. Hobby altimeter setting.

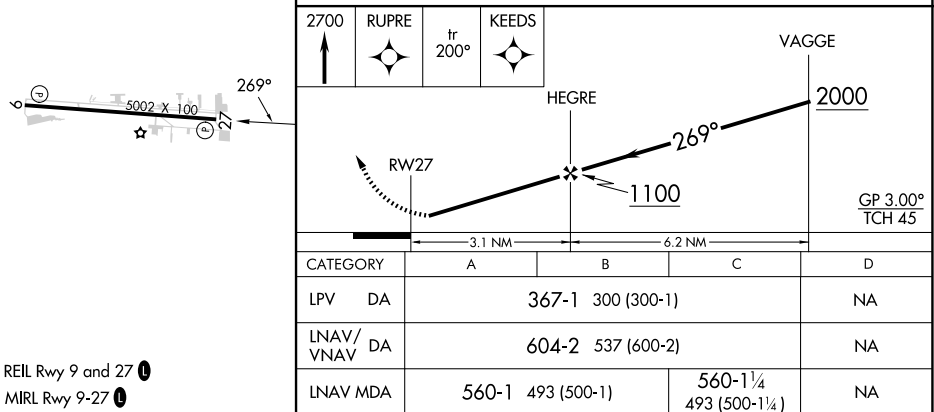
MISSED APPROACH: Climb to 2700 direct RUPRE and via 200° track to KEEDS.

AWOS-3 123.625	HOUSTON APP CON 123.8 257.7	CLNC DEL 120.8	UNICOM 123.0 (CTAF) 0
--------------------------	---------------------------------------	--------------------------	---------------------------------

RADAR REQUIRED



ELEV 68		TDZE 67
---------	--	---------



HOUSTON, TEXAS

Amdt 1A 07NOV19

29°30'N-95°29'W

HOUSTON/SOUTHWEST (AXH)
RNAV (GPS) RWY 27

SC-5, 10 JUL 2025 to 07 AUG 2025

SC-5, 10 JUL 2025 to 07 AUG 2025