

HOUSTON, TEXAS

AL-6575 (FAA)

23222

LOC/DME I-AXH <b><u>108.9</u></b> Chan <b>26</b>	APP CRS <b>089°</b>	Rwy Idg <b>5002</b> TDZE <b>69</b> Apt Elev <b>69</b>
--	------------------------	---

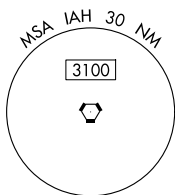
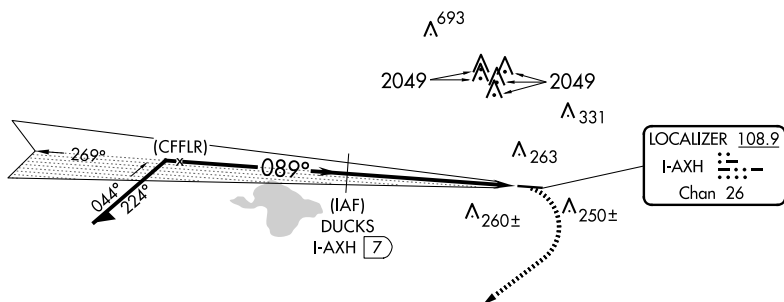
LOC RWY 9  
HOUSTON/SOUTHWEST (AXH)

RNAV 1-GPS.

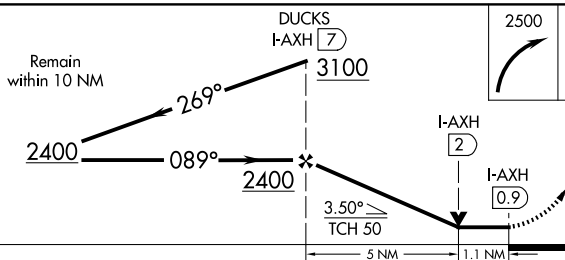
**T**  
**A** NA Rwy 9 helicopter visibility reduction below  $\frac{3}{4}$  SM NA.


MISSED APPROACH: Climbing right turn to 2500 direct KEEDS.

AWOS-3 <b>123.625</b>	HOUSTON APP CON <b>123.8 257.7</b>	CLNC DEL <b>120.8</b>	UNICOM <b>123.0 (CTAF) 0</b>
--------------------------	---------------------------------------	--------------------------	---------------------------------



ELEV 69	TDZE 69
---------	---------



CATEGORY	A	B	C	D
S-LOC 9	540-1 471 (500-1)		540-1 <sup>3</sup> / <sub>8</sub> 471 (500-1 <sup>3</sup> / <sub>8</sub> )	NA
 CIRCLING	580-1 511 (600-1)		700-1 <sup>3</sup> / <sub>4</sub> 631 (700-1 <sup>3</sup> / <sub>4</sub> )	NA

REIL Rwy 9 and 27 **L**  
MIRL Rwy 9-27 **L**

HOUSTON, TEXAS  
Amdt 4 20JUN19

29°30'N-95°29'W

HOUSTON/SOUTHWEST (AXH)  
LOC RWY 9

SC-5, 10 JUL 2025 to 07 AUG 2025

SC-5, 10 JUL 2025 to 07 AUG 2025