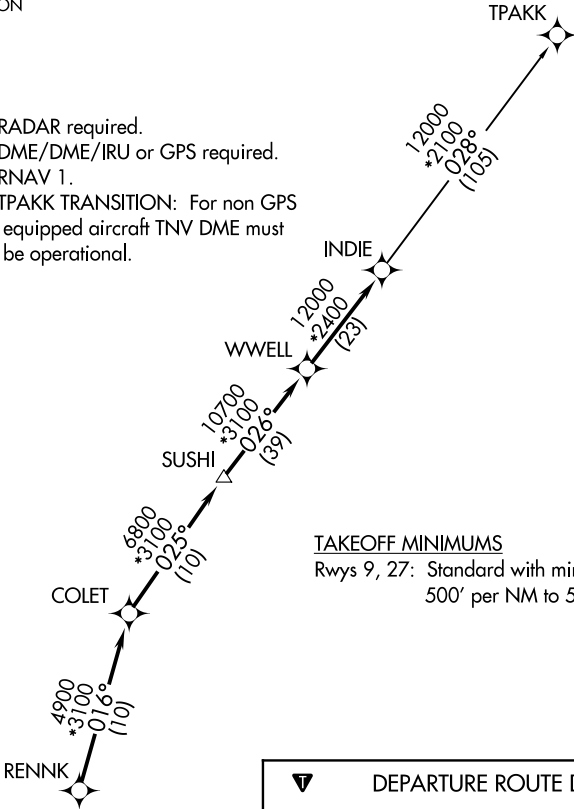


AWOS-3
123.625
CLNC DEL
120.8
CTAF
123.0
HOUSTON DEP CON
123.8 257.7

TOP ALTITUDE:
ASSIGNED BY ATC

- NOTE: RADAR required.
NOTE: DME/DME/IRU or GPS required.
NOTE: RNAV 1.
NOTE: TPAKK TRANSITION: For non GPS
equipped aircraft TNV DME must
be operational.



TAKEOFF MINIMUMS
Rwys 9, 27: Standard with minimum climb of
500' per NM to 580.

DEPARTURE ROUTE DESCRIPTION

TAKEOFF RUNWAY 9: Climb on heading 089° to
2000 for RADAR vectors to RENNK, thence . . .
TAKEOFF RUNWAY 27: Climb on heading 269° to
2200 for RADAR vectors to RENNK, thence . . .
. . . . on track 016° to COLET, then on track 025°
to SUSHI, then on track 026° to WWELL, then on
track 026° to INDIE, then on (transition).
Maintain ATC assigned altitude. Expect filed
altitude 10 minutes after departure.

TPAKK TRANSITION (INDIE8.TPAKK)

NOTE: Chart not to scale.