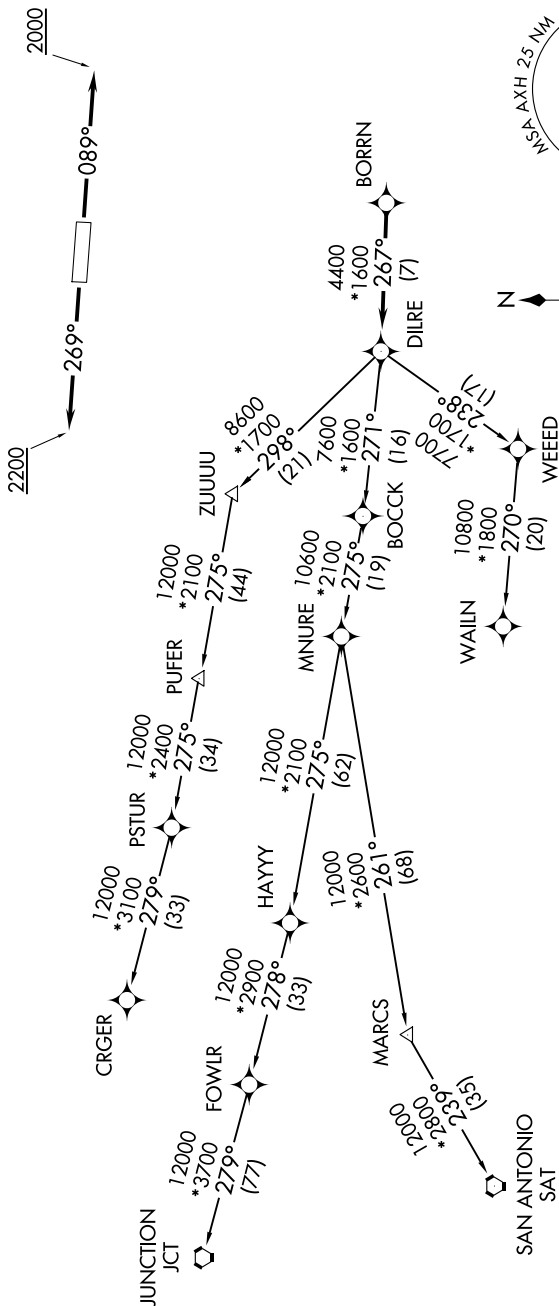


HOUSTON/SOUTHWEST (AXH)

**TOP ALTITUDE:
ASSIGNED BY ATC**



NOTE: CRGER-TRANSITION ATC assigned only for aircraft departing 54T, AXH, EFD, GLS, HPY, IWS, LBX, LVJ, SGR, TME, T00, T41.

(CONTINUED ON FOLLOWING PAGE)

SC-5, 10 JUL 2025 to 07 AUG 2025

NOTE: Chart not to scale.