

(BLTWY7.BLTWY) 21336

AL-6575 (FAA)

HOUSTON/SOUTHWEST (AXH)
HOUSTON, TEXAS

BLTWY SEVEN DEPARTURE (RNAV)

TOP ALTITUDE:
ASSIGNED BY ATC

AWOS-3
123.625
CLNC DEL
120.8
CTAF
123.0
HOUSTON DEP CON
123.8 257.7

NOTE: RADAR required.
NOTE: DME/DME/IRU or GPS required.
NOTE: RNAV 1.

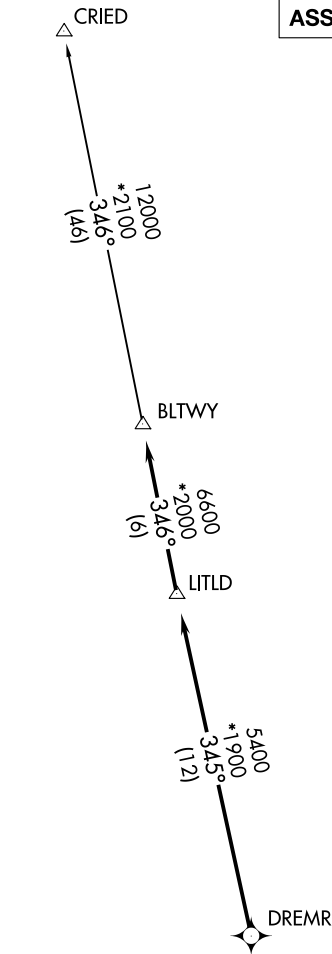
TAKEOFF MINIMUMS
Rwy 9, 27: Standard with minimum climb of
500' per NM to 580.

▼ DEPARTURE ROUTE DESCRIPTION

TAKEOFF RUNWAY 9: Climb on heading 089° to 2000 for RADAR vectors to DREMR, thence . . .
TAKEOFF RUNWAY 27: Climb on heading 269° to 2200 for RADAR vectors to DREMR, thence . . .

...on track 345° to LITLD, then on track 346° to BLTWY, then on (transition).
Maintain ATC assigned altitude. Expect filed altitude 10 minutes after departure.

CRIED TRANSITION (BLTWY7.CRIED)



NOTE: Chart not to scale.

BLTWY SEVEN DEPARTURE (RNAV)
(BLTWY7.BLTWY) 07OCT21

HOUSTON, TEXAS
HOUSTON/SOUTHWEST (AXH)

SC-5, 10 JUL 2025 to 07 AUG 2025

SC-5, 10 JUL 2025 to 07 AUG 2025