

WAAS CH <b>86817</b> <b>W13A</b>	APP CRS <b>133°</b>	Rwy Idg TDZE Apt Elev	<b>4698</b> <b>2348</b> <b>2349</b>
----------------------------------------	------------------------	-----------------------------	-------------------------------------------

RNAV (GPS) RWY 13

ROCK COUNTY (RBE)

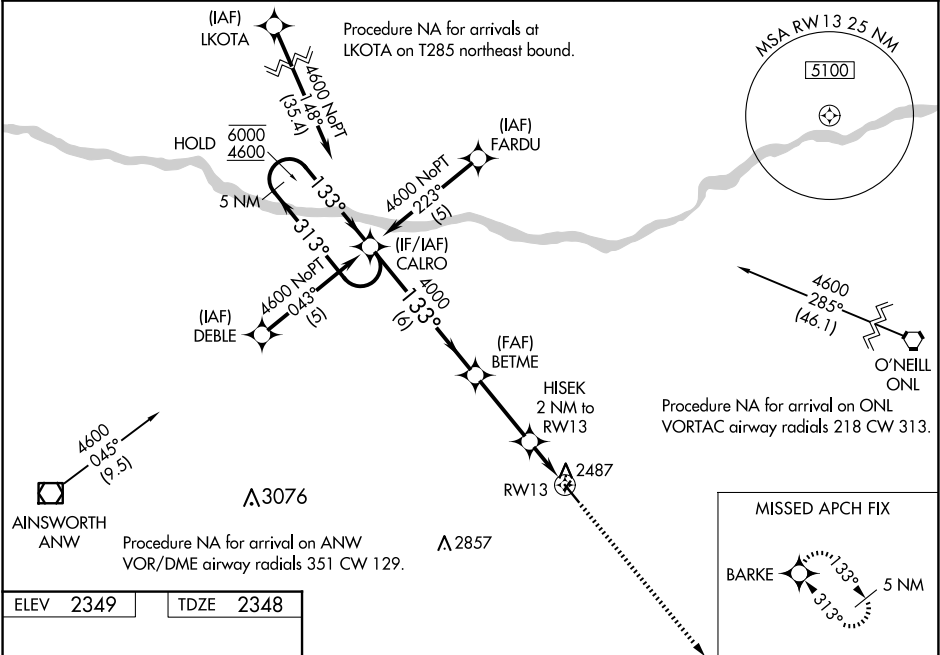
RNP APCH.

NA

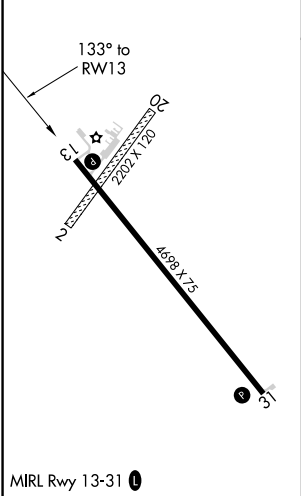
Circling NA to Rwy 2 and 20. Rwy 13 helicopter visibility reduction below 1 SM NA. Baro-VNAV NA. Use Ainsworth altimeter setting; when not received, use O'Neill altimeter setting and increase LPV DA to 2778 feet and visibility ¼ SM, LNAV/VNAV DA to 2815 feet and visibility ¼ SM; increase all MDAs 60 feet. Straight-in Rwy 13 NA at night, Circling Rwy 13 NA at night.

MISSED APPROACH:  
Climb to 5100 direct BARKE and hold.

ANW AWOS-3 <b>118.325</b>	DENVER CENTER <b>127.95 338.2</b>	CTAF <b>122.90</b>
------------------------------	--------------------------------------	-----------------------



ELEV	2349	TDZE	2348
------	------	------	------



5 NM Holding Pattern		CALRO	BETME	HISEK 2 NM to RWY 13	RWY 13
6000 ← 313°		4600 → 133°	4000	4000	
GP 3.00° TCH 40				*3020	
		6 NM	3.1 NM	2 NM	
CATEGORY	A	B	C	D	
LPV DA	2723-1	375 (400-1)	NA		
LNAV/VNAV DA	2760-1 ⅛	412 (500-1 ⅛)	NA		
LNAV MDA	2880-1	532 (600-1)	NA		
CIRCLING	2920-1	571 (600-1)	NA		