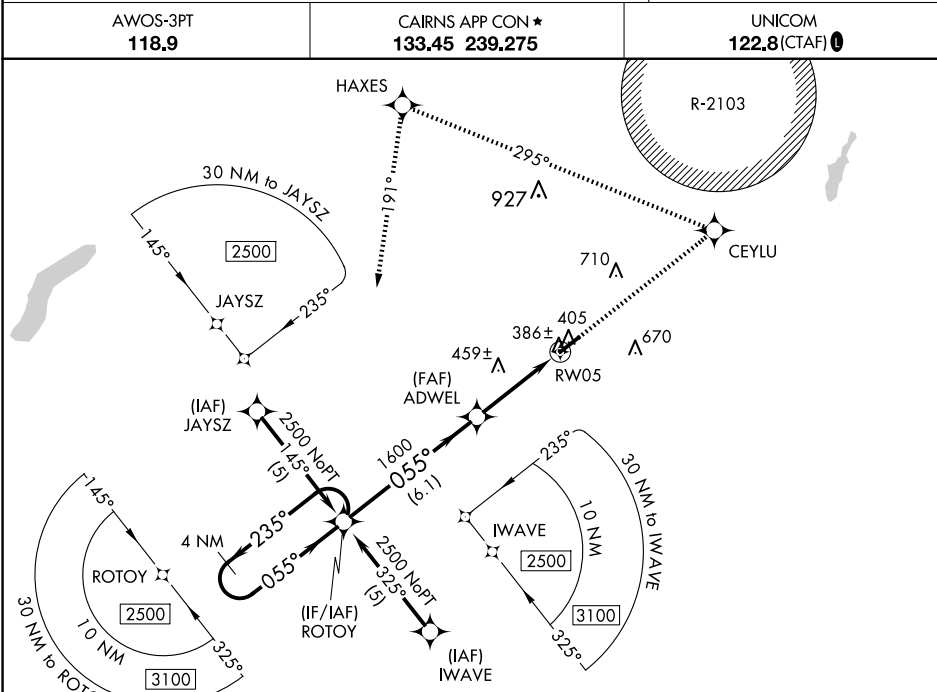


WAAS CH <b>72614</b> <b>W05A</b>	APP CRS <b>055°</b>	Rwy Idg <b>5080</b> TDZE <b>360</b> Apt Elev <b>361</b>
--	------------------------	---

RNAV (GPS) RWY 5

ENTERPRISE MUNI (EDN)

<div><div>T</div><div>A NA</div></div>	Baro-VNAV NA. For uncompensated Baro-VNAV systems, LNAV/VNAV NA below -15°C (5°F) or above 54°C (130°F). DME/DME RNP-0.3 NA. Use Cairns AAF (Fort Novosel) altimeter setting.	MISSED APPROACH: Climb to 2500 direct CEYLU and left turn via track 295° to HAXES and left turn via track 191° to ROTOY and hold.
--	---	---



ELEV 361

TDZE 360

4 NM Holding Pattern ROTOY

2500

CEYLU

HAXES

ROTOY

2500

GP 3.00° TCH 40

055°

055°

1600

ADWEL

1600

RW05

6.1 NM

3.8 NM

VGSI and RNAV glidepath not coincident (VGSI Angle 3.00/TCH 50).

CATEGORY	A	B	C	D
LPV DA	642-1 282 (300-1)			NA
LNAV/VNAV DA	688-1¼ 328 (400-1¼)			NA
LNAV MDA	760-1 400 (400-1)			NA
CIRCLING	920-1 559 (600-1)		1100-2 739 (800-2)	NA

REIL Rwys 5 and 23

MIRL Rwy 5-23