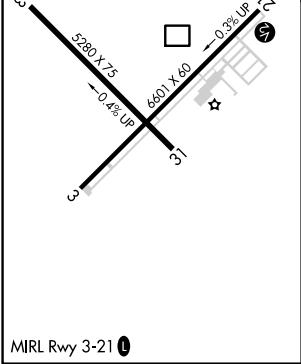
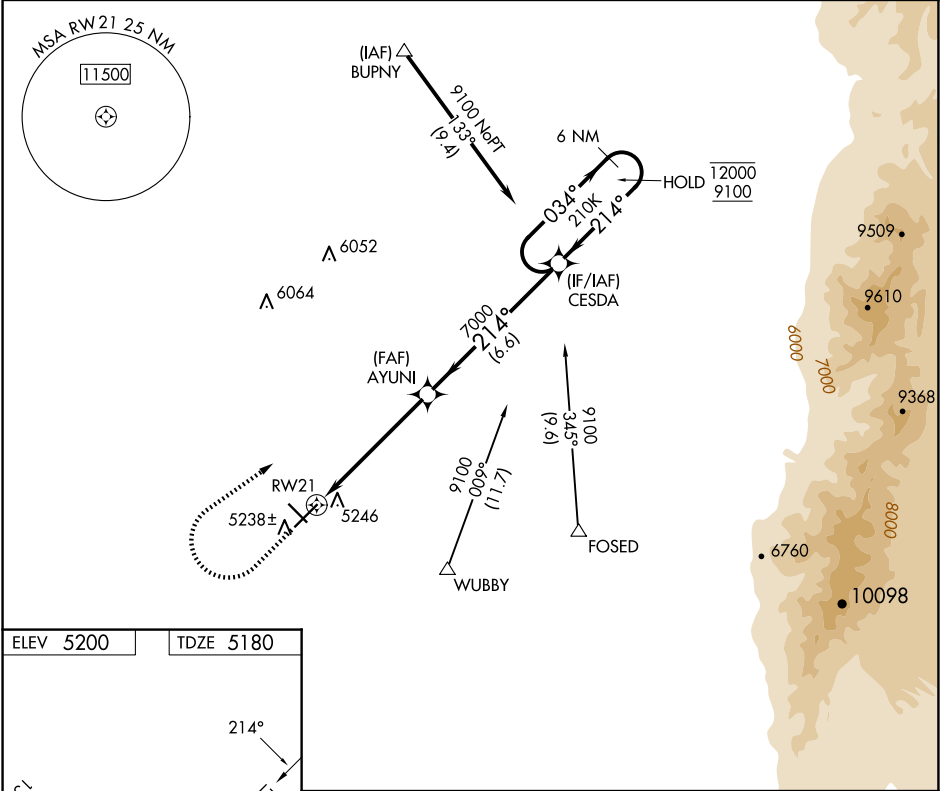


APP CRS	Rwy Ldg	6601
214°	TDZE	5180
	Apt Elev	5200

RNAV (GPS) RWY 21

BELEN RGNL (BRG)

RNP APCH		MISSED APPROACH: Climb to 6800 then climbing right turn to 9100 direct CESDA and hold.
<b>T</b>	Procedure NA at night. Rwy 21 helicopter visibility reduction below 1 SM NA.	
AWOS-3PT <b>118.55</b>	ALBUQUERQUE APP CON <b>123.9 354.1</b>	UNICOM <b>122.8 (CTAF) 0</b>



6800 ↑		9100 ↗		CESDA ✦		CESDA 6 NM Holding Pattern			
RW21 ↻		AYUNI ✕		7000 ↗ 214°		034° → 12000 ← 214° 9100			
5.6 NM		6.6 NM							
CATEGORY		A		B		C		D	
LNAV MDA		5560-1 380 (400-1)						NA	
CIRCLING		5600-1 400 (400-1)		5660-1 460 (500-1)		5660-1½ 460 (500-1½)		NA	