

APP CRS
140°

Rwy Idg
TDZE
Apt Elev

3299
297
297

RNAV (GPS) RWY 14
GLADEWATER MUNI (Ø7F')

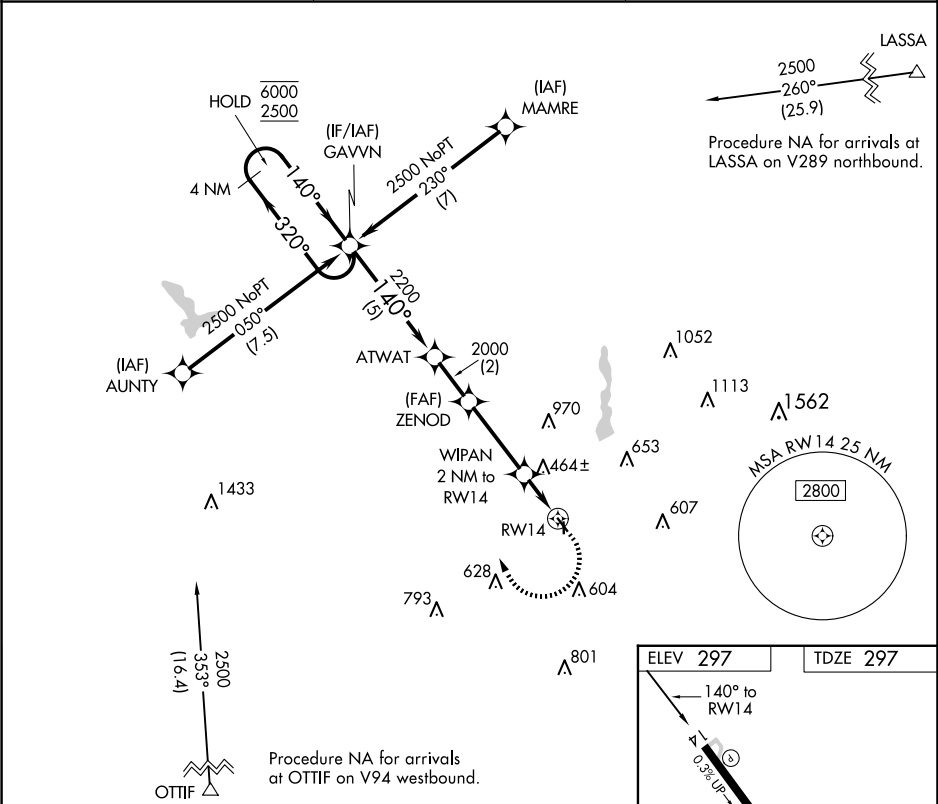
RNP APCH.

▼
NA

Procedure NA at night. Rwy 14 helicopter visibility reduction below 1 SM NA. Use Gilmer altimeter setting, when not received use Longview altimeter setting and increase all MDA 20 feet and increase LNAV Cat C visibility ½ SM.

MISSED APPROACH:
Climbing right turn to 2500 direct GAVVN and hold.

JXI AWOS-3PT 120.25	LONGVIEW APP CON ★ 124.275 257.975	CTAF 122.9
-------------------------------	--	----------------------



Visual Segment - Obstacles.					2500	GAVVN
4 NM Holding Pattern					6000	2500
GAVVN					ATWAT	ZENOD
5 NM					2 NM	3.3 NM
2 NM					2 NM	
CATEGORY	A	B	C	D		
LNAV MDA	800-1	503 (600-1)	800-1 3/8	NA		
			503 (600-1 3/8)			
CIRCLING	880-1	1000-1	1000-2	NA		
	583 (600-1)	703 (800-1)	703 (800-2)			