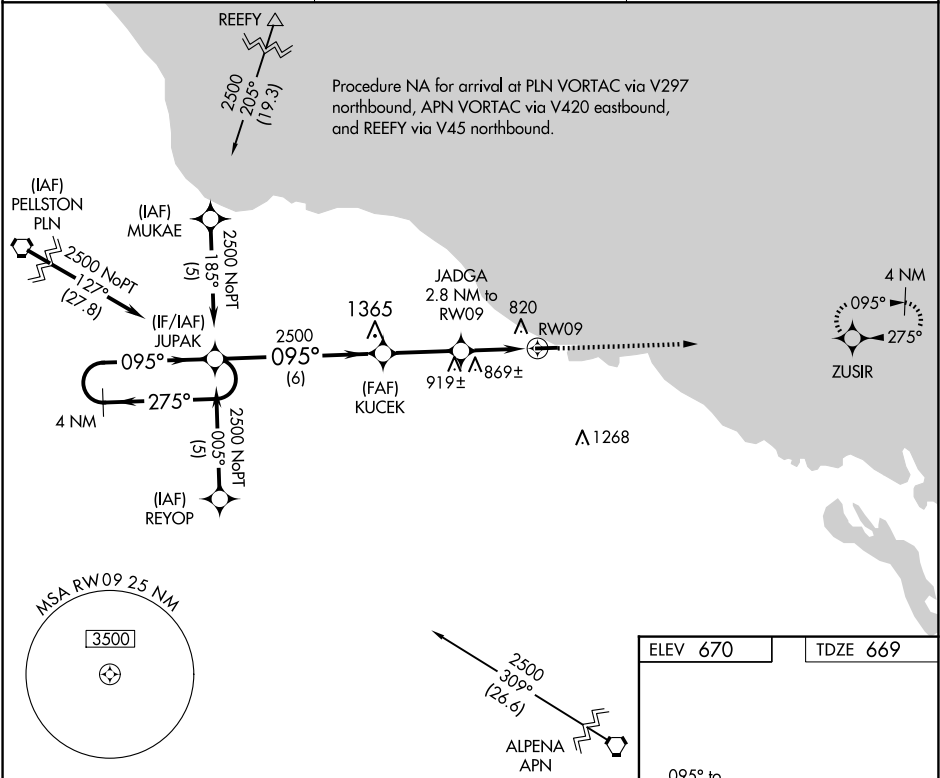


APP CRS	Rwy Idg	3886
095°	TDZE	669
	Apt Elev	670

RNAV (GPS) RWY 9

PRESQUE ISLE COUNTY (PZQ)

RNP APCH.		MISSED APPROACH: Climb to 2300 direct ZUSIR and hold.
▼ ▲ NA If local altimeter setting not received, use Alpena County Rgnl altimeter setting and increase all MDAs 60 feet. Straight-in/Circling Rwy 9 NA at night. Rwy 9 helicopter visibility reduction below 1 SM NA.		
AWOS-3 118.125	ALPENA APP CON ★ 128.425 379.3	CTAF 122.9 0



4 NM Holding Pattern		JUPAK	KUCEK	JADGA 2.8 NM to RW09	RW09
2500 ← 275° 095° →		2500	1600	2300	ZUSIR
6 NM		2.8 NM	2.8	4106 X 75	
CATEGORY	A	B	C	D	
RNAV MDA	1120-1	451 (500-1)	1120-1¼ 451 (500-1¼)	NA	
CIRCLING	1200-1 530 (600-1)	1240-1 570 (600-1)	1260-1½ 590 (600-1½)	NA	

ELEV 670

TDZE 669

REIL Rwy 9 and 27 0

MIRL Rwy 9-27 0

EC-1, 10 JUL 2025 to 07 AUG 2025

EC-1, 10 JUL 2025 to 07 AUG 2025