

ROGERS CITY, MICHIGAN

AL-6561 (FAA)

22223

APP CRS 275°	Rwy Idg TDZE Apt Elev	3727 670 670
------------------------	-----------------------------	---

RNAV (GPS) RWY 27
PRESQUE ISLE COUNTY (PZQ)

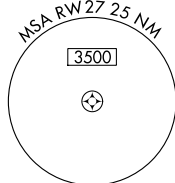
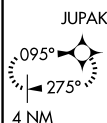
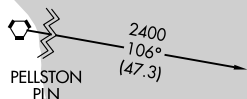
T
A NA

DME/DME RNP-0.3 NA. Circling NA at night to Rwy 9.
If local altimeter setting not received, use Alpena County
Rgnl altimeter setting and increase all MDAs 60 feet.
VDP NA with Alpena County Rgnl altimeter setting.

MISSED APPROACH: Climb to 2500 direct JUPAK and hold.

AWOS-3
118.125

ALPENA APP CON ★
128.425 379.3

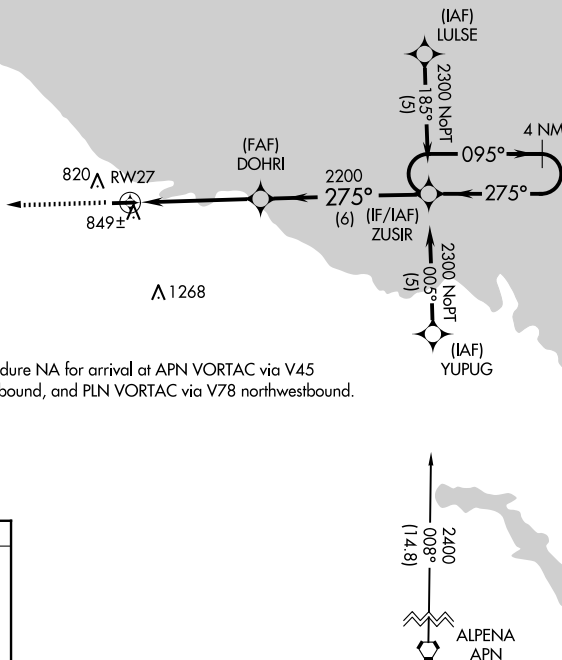
CTAF
122.9 L

1365

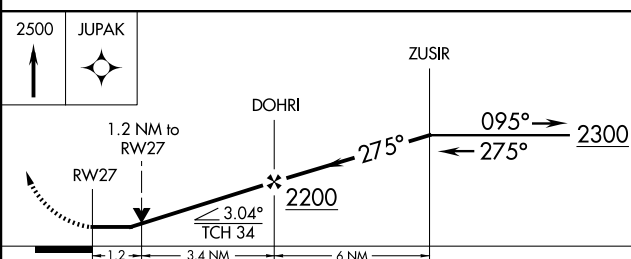
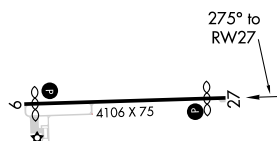
820 Δ RW27

A 1268

Procedure NA for arrival at APN VORTAC via V45 southbound, and PLN VORTAC via V78 northwestbound.



ELEV 670		TDZE 670
----------	--	----------



CATEGORY	A	B	C	D
LNAV MDA	1100-1 430 (500-1)		1100-1½ 430 (500-1½)	NA
CIRCLING	1200-1 530 (600-1)	1240-1 570 (600-1)	1260-1½ 590 (600-1½)	NA

REIL Rwy 9 and 27 **L**
MIRL Rwy 9-27 **L**

ROGERS CITY, MICHIGAN
Orig-A 11AUG22

45°24'N-83°49'W

PRESQUE ISLE COUNTY (PZQ)
RNAV (GPS) RWY 27

EC-1, 10 JUL 2025 to 07 AUG 2025