

WAAS CH <b>77931</b> <b>W33A</b>	APP CRS <b>338°</b>	Rwy Idg <b>4500</b> TDZE <b>1384</b> Apt Elev <b>1394</b>
--	------------------------	---

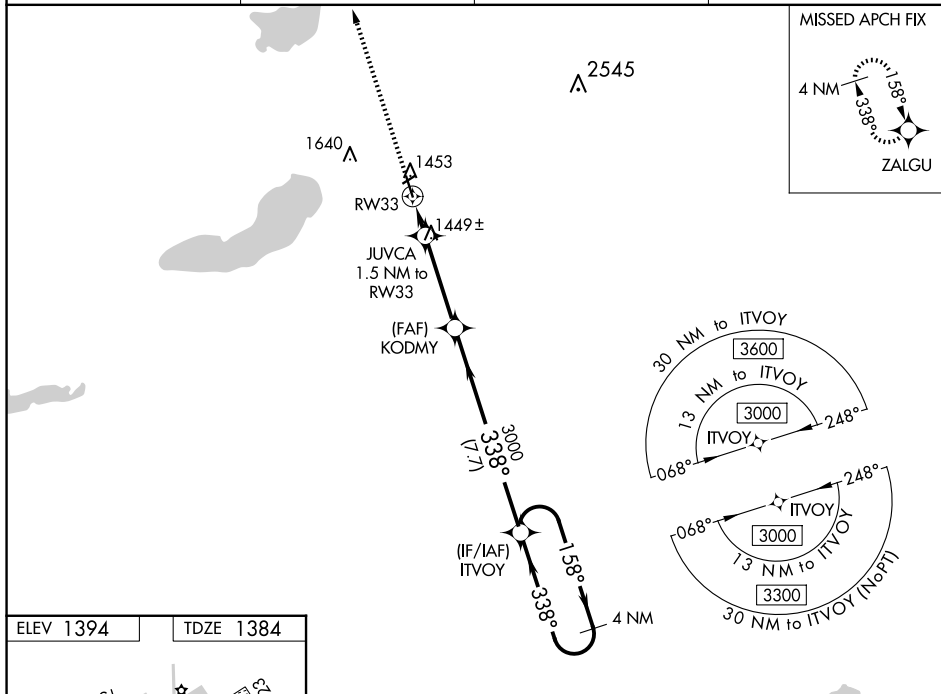
# RNAV (GPS) RWY 33

## GLENWOOD MUNI (GHW)

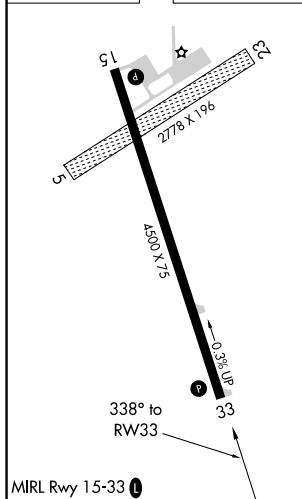
**T** Baro-VNAV NA when using Alexandria altimeter setting. For uncompensated  
**A** Baro-VNAV systems, LNAV/VNAV NA below -17°C (2°F) or above 54°C (130°F).  
DME/DME RNP-0.3 NA. Helicopter visibility reduction below 1 SM NA. When local  
altimeter setting not received, use Alexandria altimeter setting and increase all DA 36  
feet and all MDA 40 feet. Circling NA to Rwy 5/23.

**MISSED APPROACH:**  
Climb to 3000 direct  
ZALGU and hold.

AWOS-3 <b>118.925</b>	MINNEAPOLIS CENTER <b>126.1 269.2</b>	GCO <b>121.725</b>	CTAF <b>122.9 0</b>
--------------------------	--	-----------------------	------------------------



ELEV 1394		TDZE 1384
-----------	--	-----------



3000  
↑

ZALGU

VGSJ and RNAV glidepath not coincident  
(VGSJ Angle 3.00/TCH 25).

4 NM  
Holding Pattern

\*LNAV only.

KODMY  
3000

ITVOY

JUVCA  
1.5 NM to  
RW33

RW33

338°

158°

3000

338°

3000

GP 3.00°  
TCH 45

1.5 NM

3.5 NM

7.7 NM

CATEGORY	A	B	C	D
LPV DA	1634-1	250 (300-1)		NA
LNAV/ VNAV	1634-1	250 (300-1)		NA
LNAV MDA	1700-1	316 (400-1)		NA
CIRCLING	1840-1 446 (500-1)	1860-1 466 (500-1)	1940-1½ 546 (600-1½)	NA