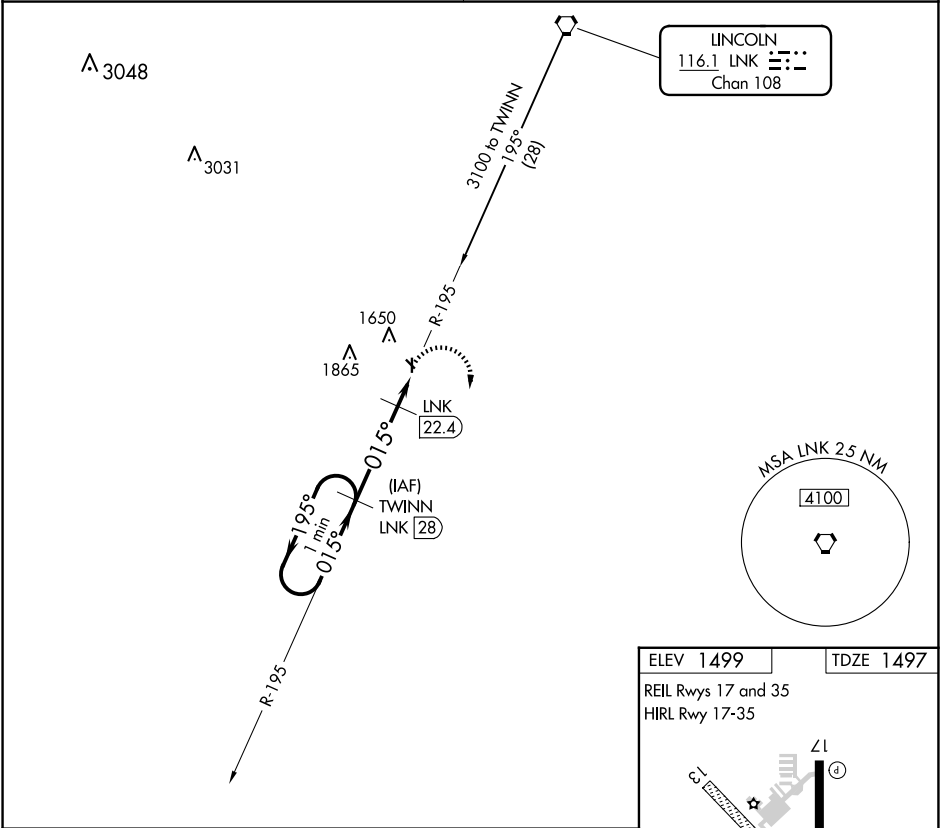


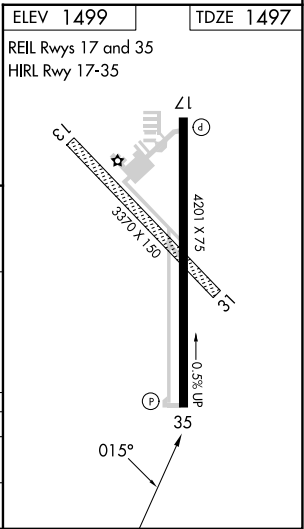
VORTAC LNK	APP CRS	Rwy Ldg	4201
116.1	015°	TDZE	1497
Chan 108		Apt Elev	1499

VOR/DME RWY 35  
CRETE MUNI (CEK)

<p>▼ ▲ NA</p> <p>Use Lincoln altimeter setting; when not received, use Beatrice altimeter setting. Visibility reduction by helicopters NA.</p>	<p>MISSED APPROACH: Climbing right turn to 3100 via LNK R-195 to TWINN/LNK 28 DME and hold.</p>
<p>OMAHA APP CON</p> <p>124.0 270.3</p>	<p>UNICOM</p> <p>122.8 (CTAF)</p>



One Minute Holding Pattern		TWINN LNK 28	3100 LNK R-195	TWINN LNK 28
3100		195°	015°	2140
		5.6 NM	1.9 NM	
CATEGORY	A	B	C	D
S-35	2080-1 583 (600-1)	2080-1¼ 583 (600-1¼)	NA	
CIRCLING	2140-1 641 (700-1)	2140-1¼ 641 (700-1¼)	NA	



NC-2, 10 JUL 2025 to 07 AUG 2025

NC-2, 10 JUL 2025 to 07 AUG 2025