

WAAS
CH **77622**
W15A

APP CRS
148°

Rwy Idg
TDZE **1061**
Apt Elev **1062**

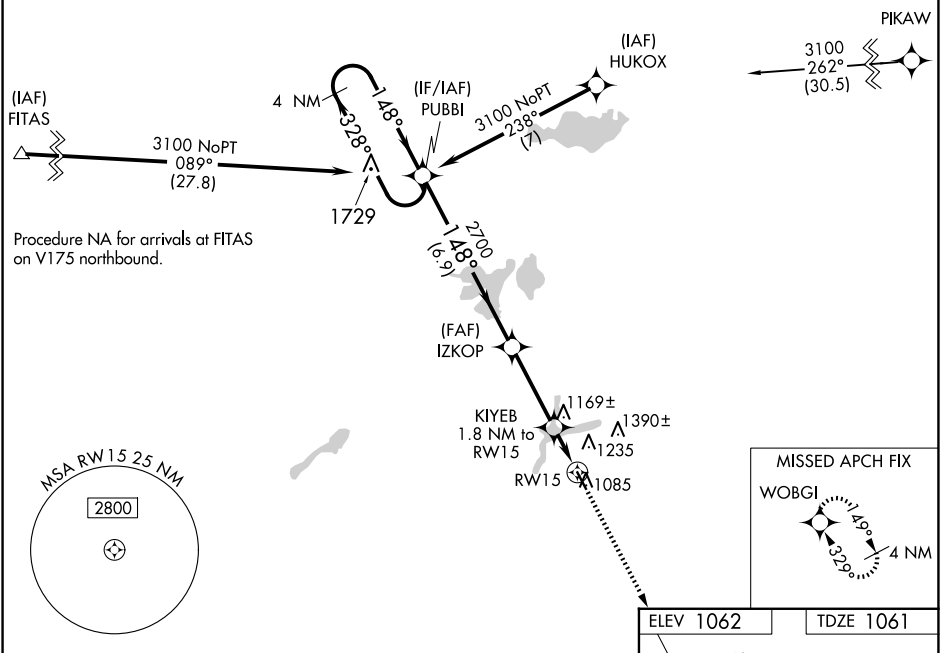
RNAV (GPS) RWY 15

HUTCHINSON MUNI/BUTLER FLD (HCD)

Baro-VNAV NA when using Glencoe altimeter setting. For uncompensated Baro-VNAV systems, LNAV/VNAV NA below -17°C (2°F) or above 54°C (130°F). DME/DME RNP-0.3 NA. VDP NA with Glencoe altimeter setting. When local altimeter setting not received, use Glencoe altimeter setting and increase all DA 43 feet and LPV and LNAV/VNAV all Cats visibility ½ mile; increase all MDA 60 feet and LNAV Cat C visibility ¼ mile.

MISSED APPROACH: Climb to 3000 direct WOBGI and hold.

AWOS-3 118.525	MINNEAPOLIS CENTER 127.1 290.2	GCO 121.725	UNICOM 122.8 (CTAF) 0
--------------------------	--	-----------------------	---------------------------------



4 NM Holding Pattern

PUBBI

3100 ← 328°
148° →

GP 3.00°
TCH 40°

IZKOP

2700

2700

*1640

6.9 NM

3.2 NM

0.8 NM

1 NM

3000

WOBGI

KIYEB 1.8 NM to RW15

* LNAV only

*1 NM to RW15

RW15

4000 X-75

33

CATEGORY	A	B	C	D
LPV DA	1311-7/8	250 (300-7/8)		NA
LNAV/VNAV DA	1328-7/8	267 (300-7/8)		NA
LNAV MDA	1420-1	359 (400-1)		NA
CIRCLING	1540-1	478 (500-1)	1740-2 678 (700-2)	NA

ELEV 1062

TDZE 1061

148°

MIRL Rwy 15-33 0

REIL Rwy 15 and 33 0