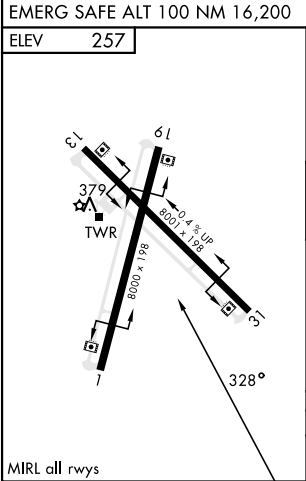
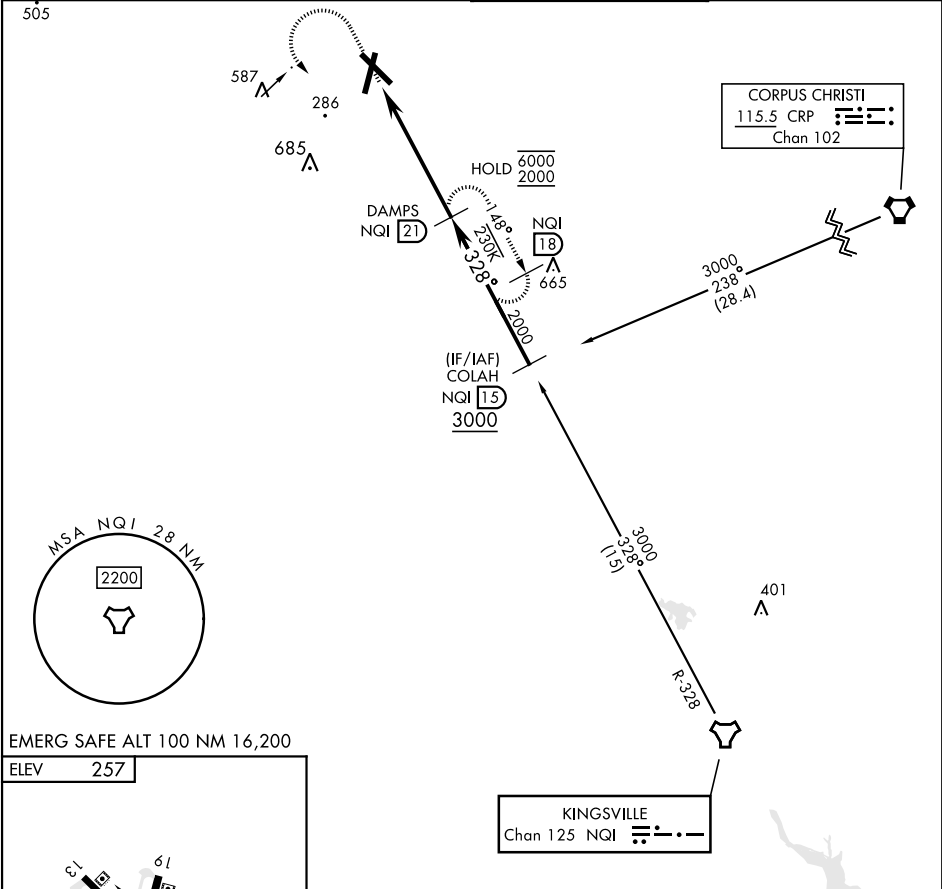
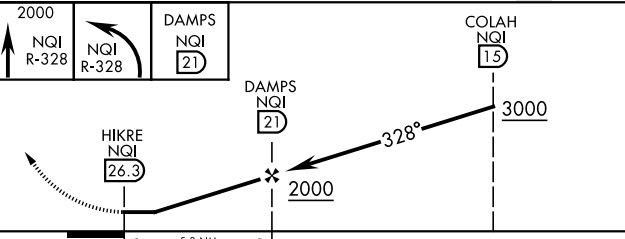


TACAN Chan 125	APCH CRS 328°	Rwy Idg TDZE Arprt Elev N/A N/A 257	[USN]	ORANGE GROVE NALF (KNOG)
--------------------------	-------------------------	---	-------	--------------------------

MISSED APPROACH: Climb to 2000 on NQI TACAN R-328, then left turn to intercept NQI R-328 to DAMPS and hold.			
ATIS ★ 254.35	KINGSVILLE APP CON 119.90 290.45	TOWER ★ 128.4 281.425	GND CON 229.4



 <p>2000 NQI R-328</p> <p>NQI R-328</p> <p>DAMPS NQI 21</p> <p>COLAH NQI 15</p> <p>DAMPS NQI 21</p> <p>HIKRE NQI 26.3</p> <p>328°</p> <p>2000</p> <p>3000</p> <p>5.3 NM</p>				
CATEGORY	A	B	C	D
C CIRCLING	720-1	463 (500-1)	920-1¾ 663 (700-1¾)	1000-2½ 743 (800-2½)

SC-3, 10 JUL 2025 to 07 AUG 2025

SC-3, 10 JUL 2025 to 07 AUG 2025