

ORANGE GROVE, TEXAS

ILS Z or LOC Z RWY 13

LOC/DME I-NOG <b>110.5</b> Chan <b>42</b>	APCH CRS <b>130°</b>	Rwy Idg <b>8001</b> TDZE <b>257</b> Arpt Elev <b>257</b>
---	-------------------------	--

[USN]

ORANGE GROVE NALF (KNOG)

TACAN, DME required.

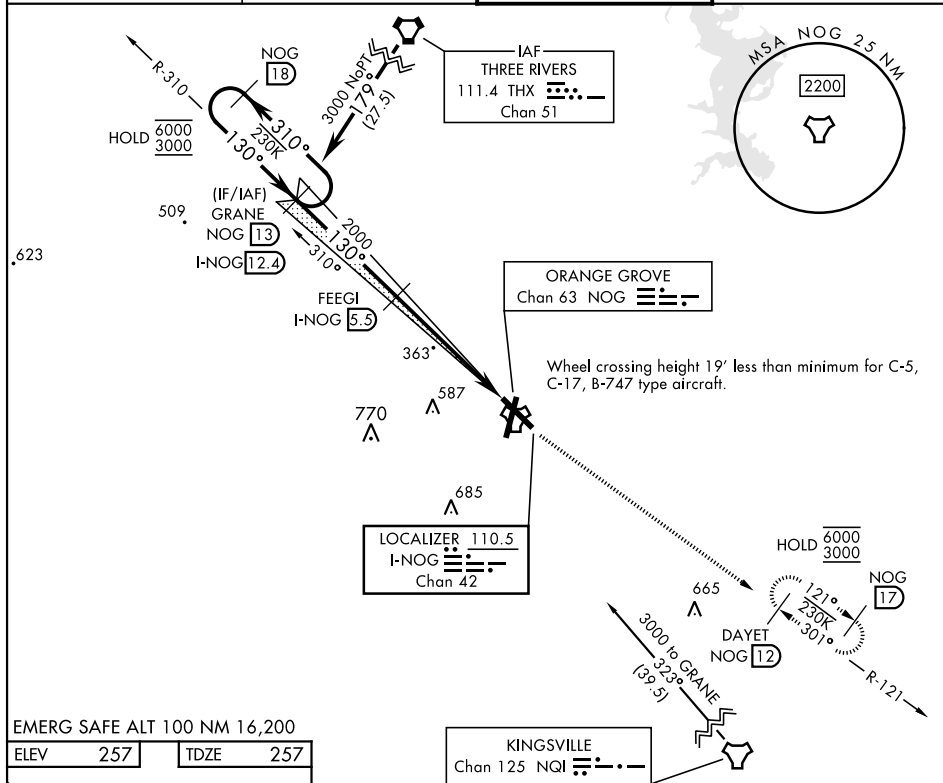
**MISSED APPROACH:** Climb to 700, then climb to 3000 intercept NOG TACAN R-121 to DAYET and hold.

ATIS ★  
254.35

KINGSVILLE APP CON  
119 90 290 45

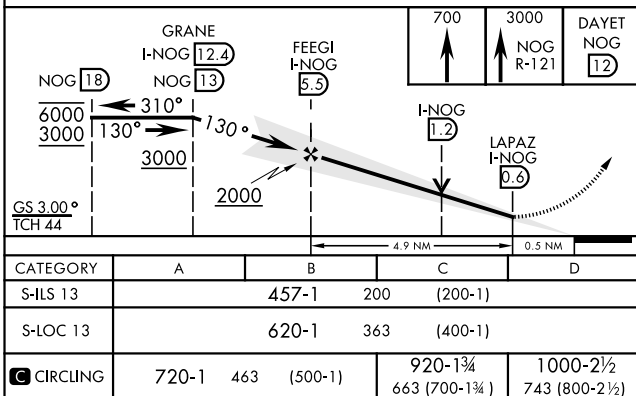
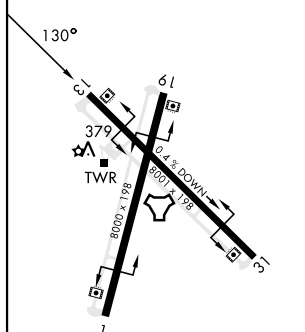
TOWER ★  
128.4 281.425

GND CON  
**229.4**



EMERG SAFE ALT 100 NM 16,200

ELEV	257		TDZE	257
------	-----	--	------	-----



MIRL all rwys

ORANGE GROVE, TEXAS

27°54'N-98°03'W

ORANGE GROVE NALF (KNOG)

Amdt 1 13JUN24

ILS Z or LOC Z RWY 13

SC-3, 10 JUL 2025 to 07 AUG 2025

SC-3, 10 JUL 2025 to 07 AUG 2025