

ORANGE GROVE, TEXAS

ILS X or LOC X RWY 13

LOC/DME I-NOG 110.5 Chan 42	APCH CRS 130°	Rwy Idg 8001 TDZE 257 Arpt Elev 257
---	-------------------------	--

[USN]

ORANGE GROVE NALF (KNOG)

TACAN required

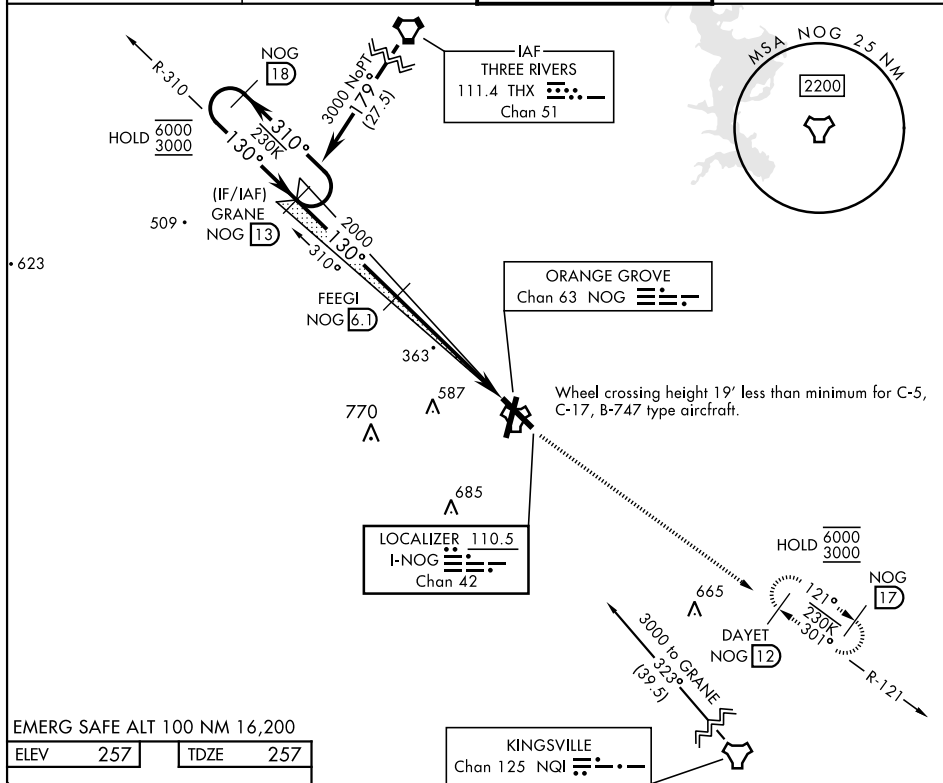
MISSED APPROACH: Climb to 700 then climb to 3000 intercept NOG TACAN R-121 to DAYET and hold.

ATIS ★
254.35

KINGSVILLE APP CON
119.90 290.45

TOWER ★
128.4 281.425

GND CON
229.4



EMERG SAFE ALT 100 NM 16,200

ELEV	257		TDZE	257
------	-----	--	------	-----

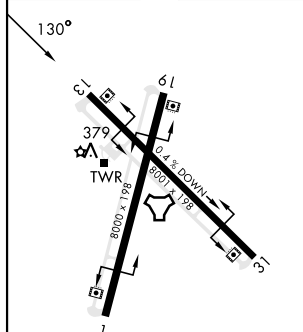


Figure 1 is a 4th Mode of Operation RNAV (RNP) approach chart. It shows a straight-in approach with a heading of 310°. The chart includes a 4.9 NM RNP value and a 0.5 NM RNP value. The chart also shows a 3000m TCH and a 3000m RNP value. The chart is labeled with 'GRANE' and 'FEEGI' and includes a 'DAYT' box with a '12' value. The chart is also labeled with 'NOG' and 'R-121'.

MIRL all rwys

ORANGE GROVE, TEXAS

27°54'N-98°03'W

ORANGE GROVE NALF (KNOG)

Amdt 1 13JUN24

ILS X or LOC X RWY 13

SC-3, 10 JUL 2025 to 07 AUG 2025