

HI-ILS Y or LOC Y RWY 13

LOC/DME I-NOG 110.5 Chan 42	APCH CRS 130°	Rwy Idg TDZE Arpt Elev 8001 257 257
---	-------------------------	---

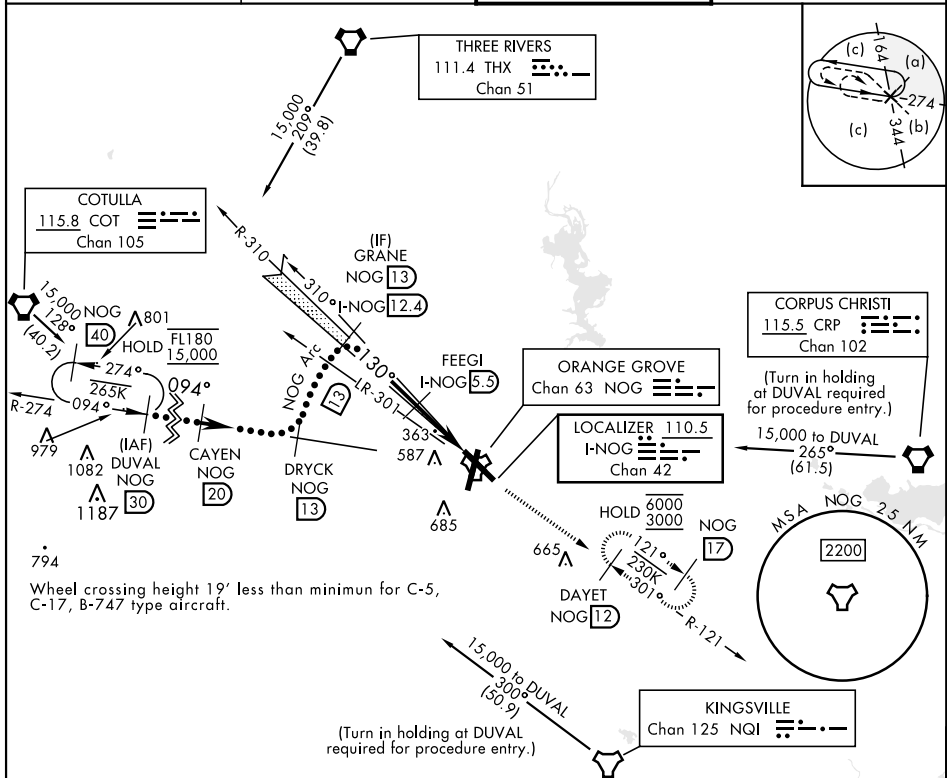
[USN]

ORANGE GROVE NALF (KNOG)

TACAN, DME required.

MISSED APPROACH: Climb to 700 then climbing to 3000 intercept NOG TACAN R-121 to DAYET and hold.

ATIS ★ 254.35	KINGSVILLE APP CON 119.90 290.45	TOWER ★ 128.4 281.425	GND CON 229.4
-------------------------	--	---------------------------------	-------------------------



EMERG SAFE ALT 100 NM 16,200

	ELEV 257	TDZE 257
DUVAL NOG 30	CAYEN NOG 20	DRYCK NOG 13
*15,000	*Or as assigned	8000
GS 3.00°	TCH 44	
700	3000	DAYET NOG 12
NOG R-121	NOG I-NOG 12.4	NOG I-NOG 1.2
FEEGI I-NOG 5.5	NOG LAPAZ I-NOG 0.6	NOG TACAN
3000	2000	
Arc	4.9 NM	0.5 NM
CATEGORY	C	D
S-ILS 13	457-1	200 (200-1)
S-LOC 13	620-1	363 (400-1)
CIRCLING	920-1¾ 663 (700-1¾)	1000-2½ 743 (800-2½)
		1000-2¾ 743 (800-2¾)

HI-ILS Y or LOC Y RWY 13