

# HI-ILS W or LOC W RWY 13

LOC/DME I-NOG <b>110.5</b> Chan <b>42</b>	APCH CRS <b>130°</b>	Rwy Idg TDZE Arpt Elev <b>8001</b> <b>257</b> <b>257</b>
---	-------------------------	---

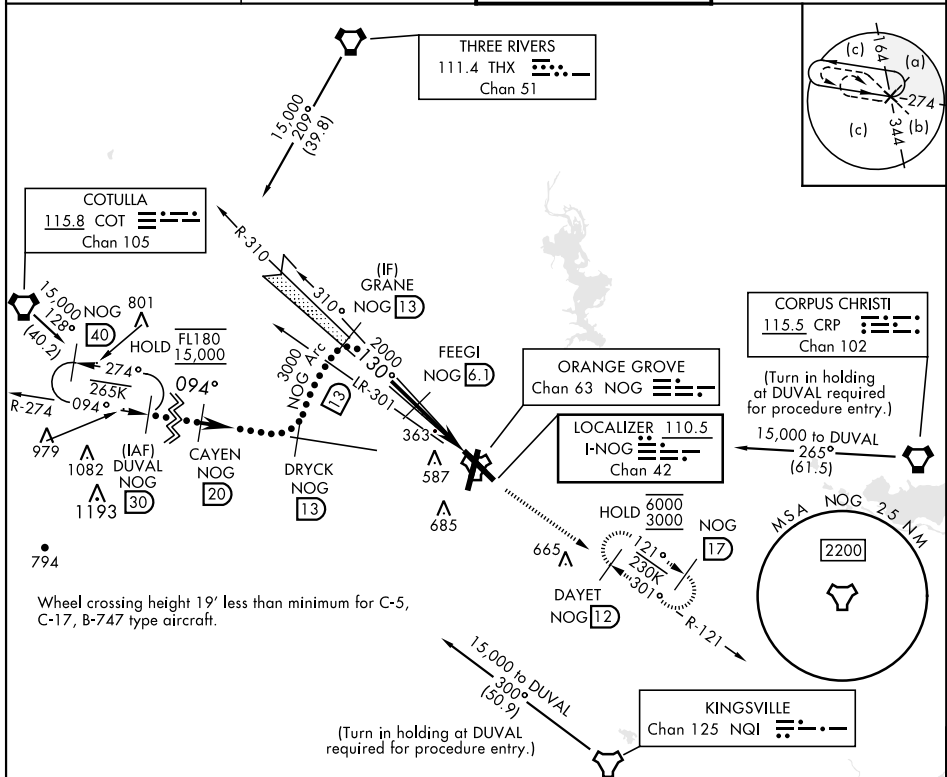
[USN]

ORANGE GROVE NALF (KNOG)

TACAN required

MISSED APPROACH: Climb to 700 then climbing to 3000 intercept NOG TACAN R-121 to DAYET and hold.

ATIS ★ <b>254.35</b>	KINGSVILLE APP CON <b>119.90 290.45</b>	TOWER ★ <b>128.4 281.425</b>	GND CON <b>229.4</b>
-------------------------	--	---------------------------------	-------------------------



	ELEV 257	TDZE 257
DUVAL NOG 30	CAYEN NOG 20	DRYCK NOG 13
*15,000	*Or as assigned	8000
GS 3.00°	TCH 44	
CATEGORY	C	D
S-ILS 13	457-1	200 (200-1)
S-LOC 13	620-1	363 (400-1)
CIRCLING	920-1¾ 663 (700-1¾)	1000-2½ 743 (800-2½)

	E
S-ILS 13	1000-2¾ 743 (800-2¾)

MIRL all rwys

# HI-ILS W or LOC W RWY 13