

WAAS CH 50139 W34A	APP CRS 337°	Rwy Idg TDZE 769 Apt Elev 774	5001 769 774
--	------------------------	---	---

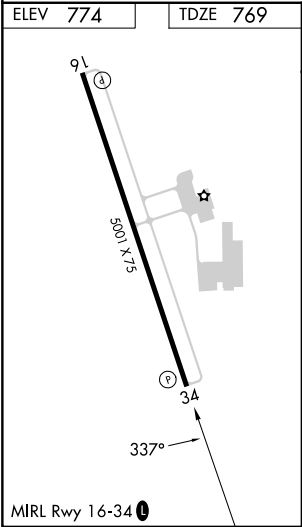
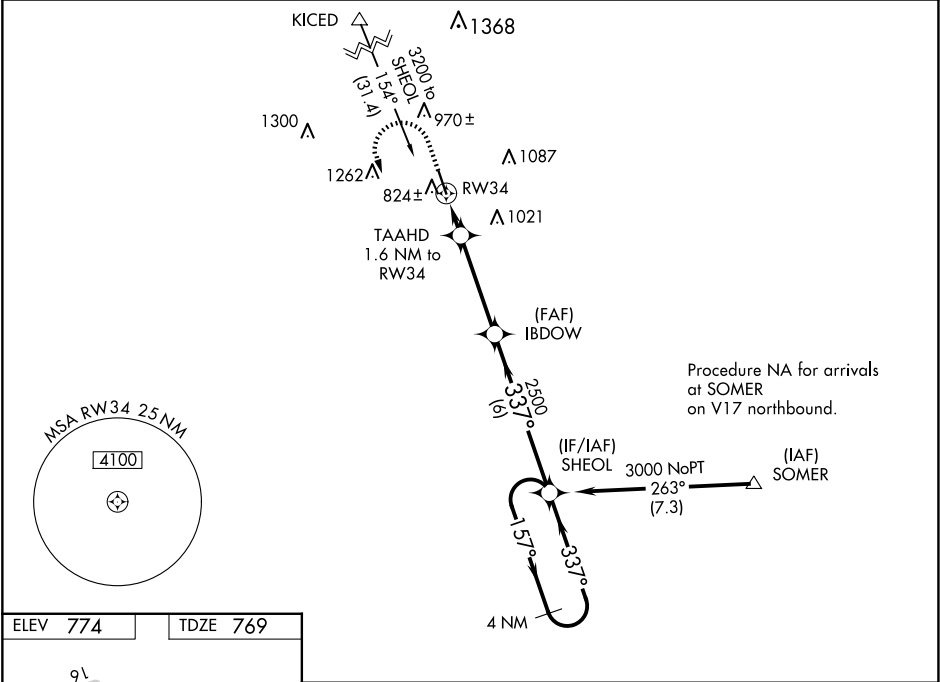
RNAV (GPS) RWY 34






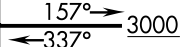

CASTROVILLE MUNI (CVB)

For uncompensated Baro-VNAV systems, LNAV/VNAV NA below -15°C (5°F) or above 54°C (130°F). DME/DME RNP-0.3 NA. When local altimeter setting not received, use Lackland AFB (Kelly Fld Annex) altimeter setting: increase all DA/MDA 60 feet and all visibilities ¼ mile. Helicopter visibility reduction below ¾ SM NA. Night landing: Rwy 16 NA.

MISSED APPROACH: Climb to 1300 then climbing left turn to 3000 direct SHEOL and hold.

AWOS-3 119.25	SAN ANTONIO APP CON 118.05 353.5	UNICOM 122.8 (CTAF) 0
-------------------------	--	---------------------------------



1300	3000	SHEOL	4 NM Holding Pattern	
				
*LNAV only.		TAAHD 1.6 NM to RW34	IBDOW 2500	SHEOL
				
	*1300	2500	157°	3000
			←337°	
				GP 3.00° TCH 40
	1.6 NM	3.7 NM	6 NM	
CATEGORY	A	B	C	D
LPV DA	1019-7/8 250 (300-7/8)			NA
LNAV/VNAV DA	1127-1¼ 358 (400-1¼)			NA
LNAV MDA	1200-1 431 (500-1)		1200-1½ 431 (500-1½)	NA
 CIRCLING	1200-1 426 (500-1)	1380-1 606 (700-1)	1580-2¼ 806 (900-2¼)	NA

SC-3, 10 JUL 2025 to 07 AUG 2025

SC-3, 10 JUL 2025 to 07 AUG 2025