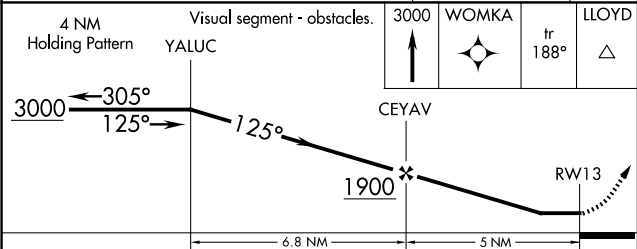
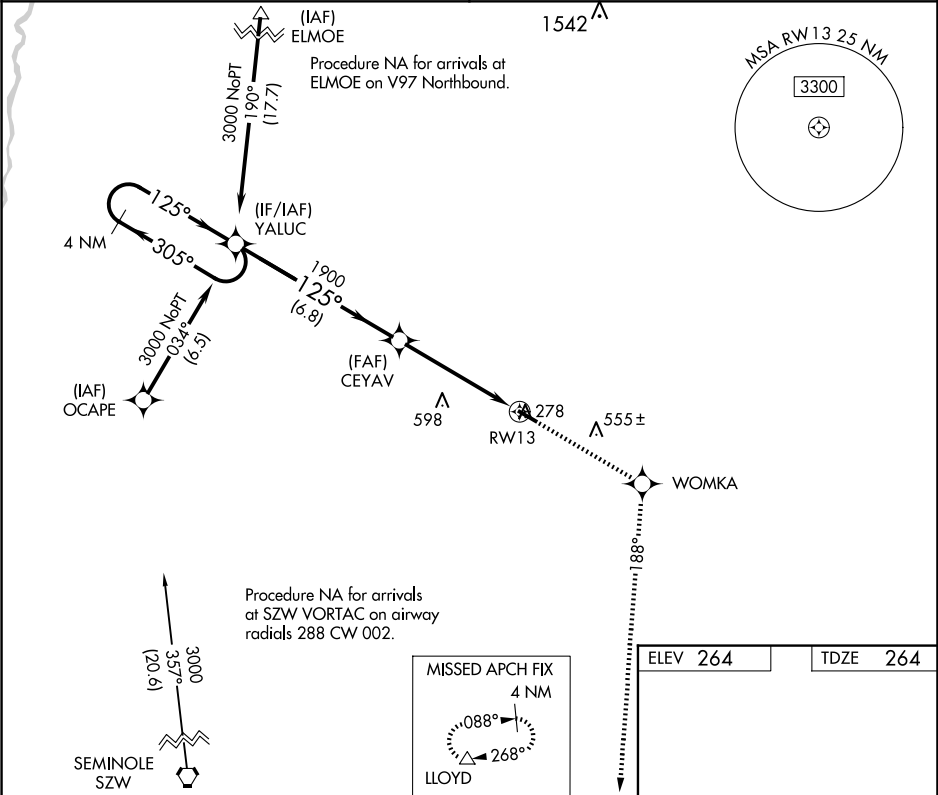


WAAS CH 90524 W13A	APP CRS 125°	Rwy Idg 4000 TDZE 264 Apt Elev 264
--	------------------------	---

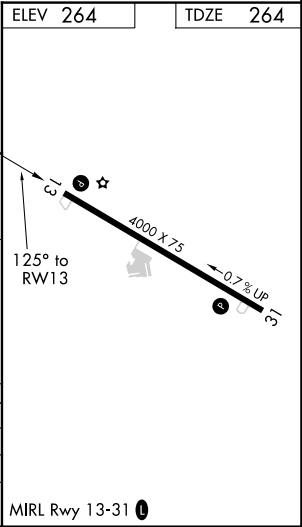
RNAV (GPS) RWY 13
CAIRO-GRADY COUNTY (70J)

<p>▽ DME/DME RNP-0.3 NA. Helicopter visibility reduction below 1 SM NA. Use Moultrie altimeter setting, when not received, use Tallahassee Intl altimeter setting and increase all MDA 60 feet; increase LP and LNAV Cats C/D visibility 1/8 SM and increase Circling Cats C/D visibility 1/4 SM. Night landing: Rwy 13 NA.</p>	<p>MISSED APPROACH: Climb to 3000 direct WOMKA and on track 188° to LLOYD and hold.</p>
--	--

TALLAHASSEE APP CON★ 128.7 254.3	UNICOM 122.7 (CTAF)
--	-------------------------------



CATEGORY	A	B	C	D
LP MDA	860-1	596 (600-1)	860-1 3/4	596 (600-1 3/4)
LNAV MDA	860-1	596 (600-1)	860-1 3/4	596 (600-1 3/4)
CIRCLING	860-1	596 (600-1)	1020-2 1/4 756 (800-2 1/4)	1020-2 1/2 756 (800-2 1/2)



SE-4, 10 JUL 2025 to 07 AUG 2025

SE-4, 10 JUL 2025 to 07 AUG 2025