

WAAS CH 82428 W03A	APP CRS 031°	Rwy Idg TDZE 473 Apt Elev 473
--	------------------------	---

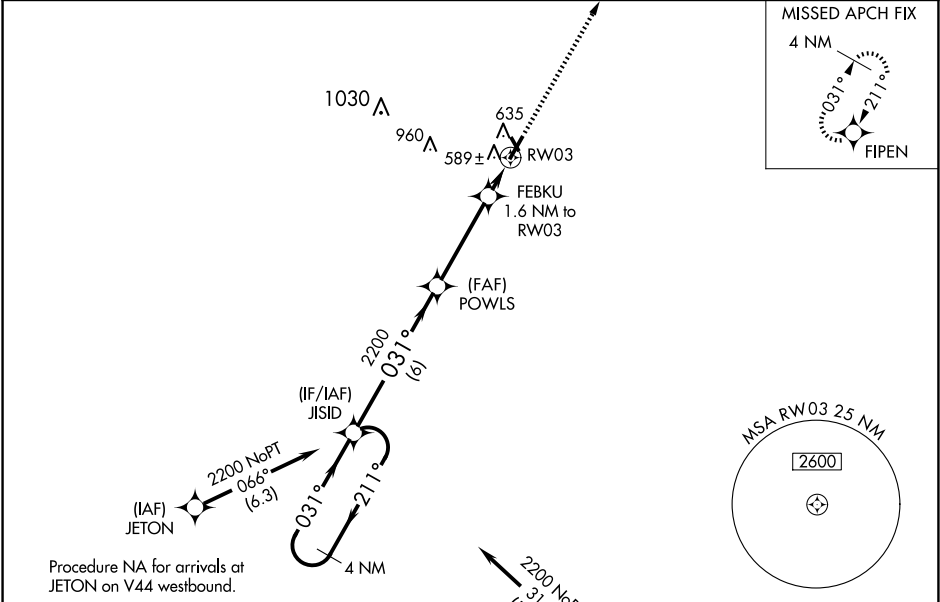
RNAV (GPS) RWY 3
FLORA MUNI (F.O.A.)

RNP APCH.

Baro-VNAV NA when using Olney-Noble altimeter setting. For uncompensated Baro-VNAV systems, LNAV/VNAV NA below -17°C or above 54°C. When local altimeter setting not received, use Olney-Noble altimeter setting; increase LPV DA to 816 feet and visibility 1/8 SM; increase LNAV/VNAV DA to 892 feet; increase all MDAs 40 feet and LNAV Cat C visibility 1/8 SM. Rwy 3 helicopter visibility reduction below 3/4 SM NA. Circling NA to Rwy 15 and 33.

MISSED APPROACH:
Climb to 2200 direct
FIPEN and hold.

AWOS-3 120.175	KANSAS CITY CENTER 127.7 351.825	UNICOM 122.7 (CTAF) 0
--------------------------	--	---------------------------------



4 NM Holding Pattern

VGSI and RNAV glidepath not coincident (VGSI Angle 3.00/TCH 23).

2200 FIPEN

JISID

POWLS

FEBKU

RWY 3

GP 3.00° TCH 40

2200

211°

031°

2200

031°

2200

1020

6 NM

3.7 NM

1.6 NM

CATEGORY	A	B	C	D
LPV DA	783-1	310 (400-1)		NA
LNAV/VNAV DA	859-1 3/8	386 (400-1 3/8)		NA
LNAV MDA	860-1	387 (400-1)	860-1 1/8 387 (400-1 1/8)	NA
CIRCLING	940-1	467 (500-1)	1160-2 687 (700-2)	NA

ELEV 473

TDZE 473

2200

211°

031°

2200

1020

6 NM

3.7 NM

1.6 NM

REIL Rwy 21

MIRL Rwy 3-21