

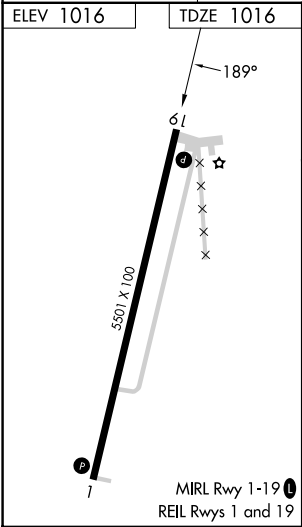
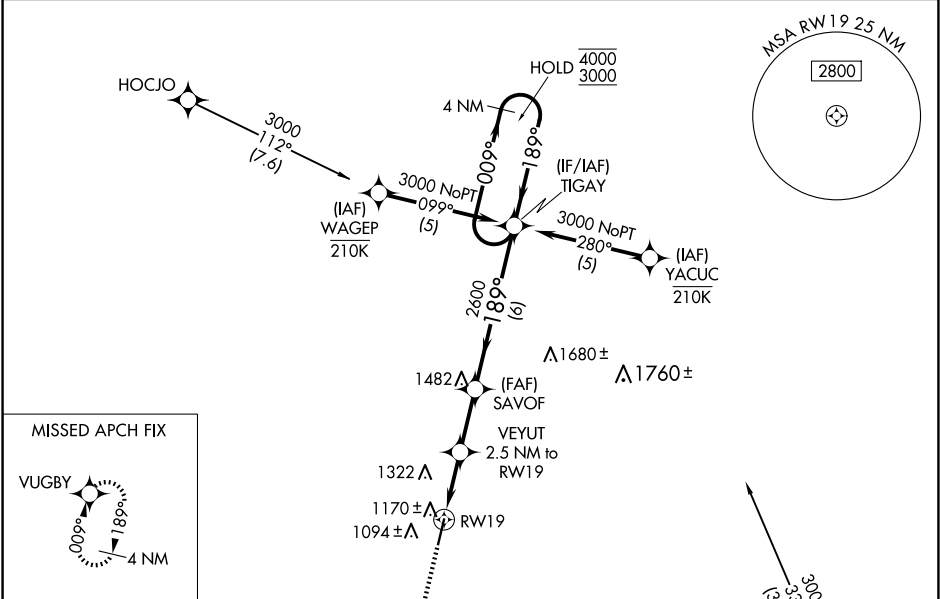
APP CRS	Rwy Idg	5501
189°	TDZE	1016
	Apt Elev	1016

RNAV (GPS) RWY 19

ALLEN COUNTY (K88)

RNP APCH - GPS.	MISSED APPROACH: Climb to 3000 direct VUGBY and hold.
<div><div></div><div>Rwy 19 helicopter visibility reduction below ¾ SM NA. When local altimeter setting not received, use Chanute altimeter setting: increase all MDAs 40 feet and LNAV visibility Cat C ¼ SM and Circling visibility Cat C ¼ SM. VDP NA when using Chanute altimeter setting.</div></div>	

AWOS-3PT 128.325	KANSAS CITY CENTER 127.725 270.25	UNICOM 122.8 (CTAF) 0
---------------------	--------------------------------------	--------------------------



3000	VUGBY	VGSI and descent angles not coincident (VGSI Angle 3.00/TCH 40).	TIGAY	4 NM Holding Pattern
	VEYUT 2.5 NM to RW19	SAVOF		
	1.1 NM to RW19	1860	2600	009° → 4000 ← 189° 3000
	1.1	1.4	2.3 NM	6 NM
CATEGORY	A	B	C	D
LNAV MDA	1420-1	404 (500-1)	1420-1½ 404 (500-1½)	NA
CIRCLING	1480-1 464 (500-1)	1660-1 644 (700-1)	1660-1¾ 644 (700-1¾)	NA