

WAAS CH <b>86628</b> <b>W01A</b>	APP CRS <b>009°</b>	Rwy Idg TDZE <b>1014</b> Apt Elev <b>1016</b>
--	------------------------	---

RNAV (GPS) RWY 1

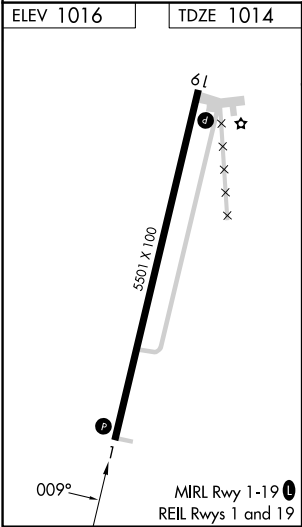
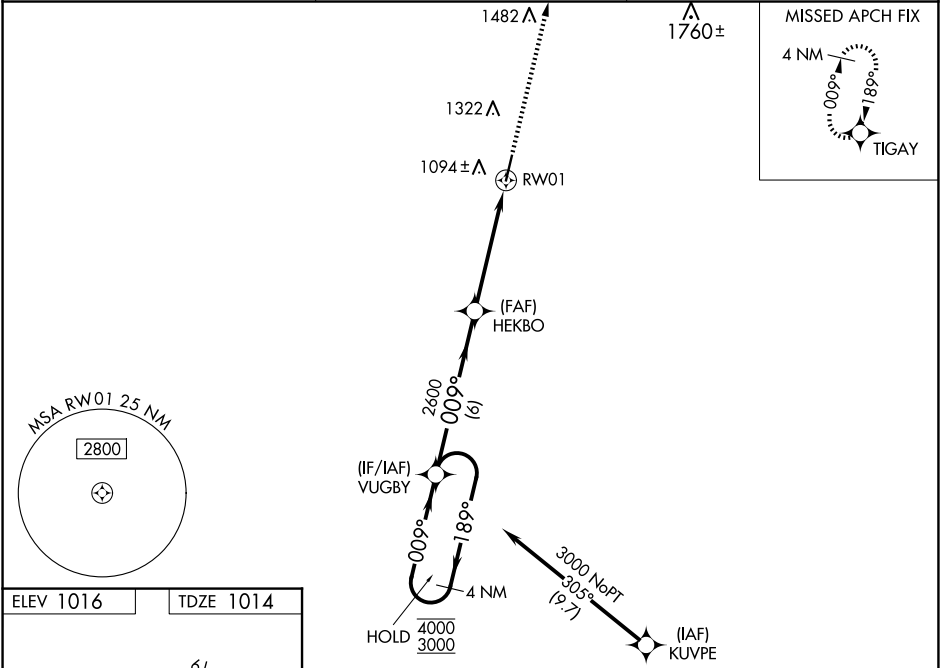
ALLEN COUNTY (K88)

RNP APCH - GPS.

Baro-VNAV and VDP NA when using Chanute altimeter setting. For uncompensated Baro-VNAV systems, LNAV/VNAV NA below -17°C or above 54°C. Rwy 1 helicopter visibility reduction below ¾ SM NA. When local altimeter setting not received, use Chanute altimeter setting: increase LPV DA to 1299 feet; increase LNAV/VNAV DA to 1324 feet; increase all MDAS 40 feet and visibility Circling Cat C ¼ SM.

MISSED APPROACH: Climb to 3000 direct TIGAY and hold.

AWOS-3PT <b>128.325</b>	KANSAS CITY CENTER <b>127.725 270.25</b>	UNICOM <b>122.8 (CTAF) 0</b>
----------------------------	---	---------------------------------



4 NM Holding Pattern				VUGBY		HEKBO		3000	TIGAY
4000 ← 189°		009° →		009°		2600		1.3 NM to RW01	
3000				2600				RW01	
GP 3.00° TCH 55				6 NM		3.5 NM		1.3	
CATEGORY	A	B	C	D					
LPV DA	1264-1		250 (300-1)		NA				
LNAV/ VNAV DA	1289-1		275 (300-1)		NA				
LNAV MDA	1480-1		466 (500-1)		1480-1 $\frac{3}{8}$ 466 (500-1 $\frac{3}{8}$ )		NA		
CIRCLING	1480-1 464 (500-1)		1660-1 644 (700-1)		1660-1 $\frac{3}{4}$ 644 (700-1 $\frac{3}{4}$ )		NA		