

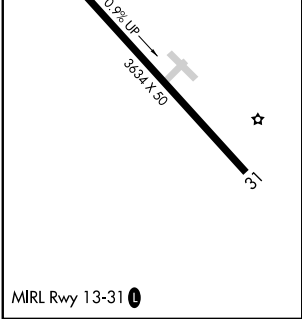
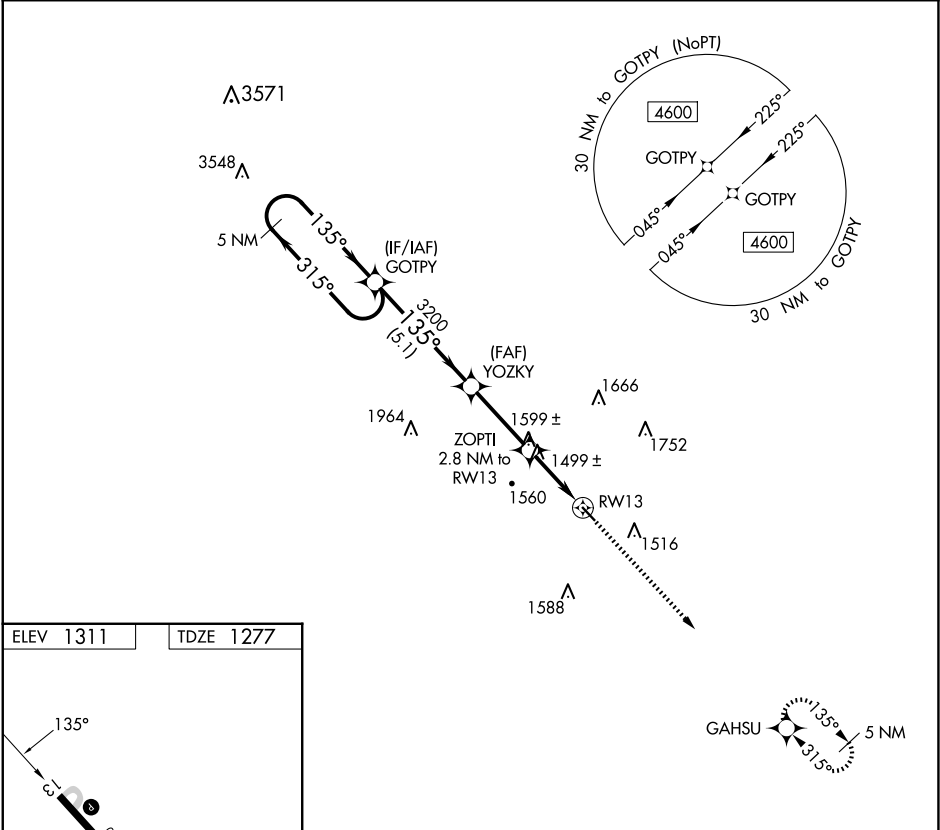
APP CRS	Rwy Idg	3634
135°	TDZE	1277
	Apt Elev	1311

RNAV (GPS) RWY 13

AVA BILL MARTIN MEML (AOV)

RNP APCH.	MISSED APPROACH: Climb to 3500 direct GAHSU and hold.
▼ ▲ NA	Procedure NA at night. Use Branson altimeter setting, if not received use Springfield Branson Natl altimeter setting and increase all MDA 20 feet. Rwy 13 helicopter visibility reduction below 1 SM NA.

BBG AWOS-3 124.625	SPRINGFIELD APP CON 126.35	UNICOM 122.7 (CTAF) 0
-----------------------	-------------------------------	--------------------------



<div>5 NM Holding Pattern</div> <div><div>←315°</div><div>→135°</div></div> <div>4600</div>				<div>VGSI and RNAV glidepath not coincident (VGSI Angle 3.00/TCH 43).</div> <div>GOTPY</div> <div>YOZKY</div> <div>3200</div> <div>3.00° TCH 40</div> <div>2200</div> <div>2.8 NM to RW13</div> <div>RW13</div>		<div>3500</div> <div>↑</div>	<div>GAHSU</div> <div>✦</div>
<div>5.1 NM</div>		<div>3.1 NM</div>	<div>2.8 NM</div>				
CATEGORY	A	B	C	D			
LNNAV MDA	1840-1 563 (600-1)			NA			

NC-3, 10 JUL 2025 to 07 AUG 2025

NC-3, 10 JUL 2025 to 07 AUG 2025