

SHELL LAKE, WISCONSIN

AL-6541 (FAA)

25163

APP CRS	Rwy Ldg	<b>3500</b>
<b>316°</b>	TDZE	<b>1233</b>
	Apt Elev	<b>1233</b>

# RNAV (GPS) RWY 32

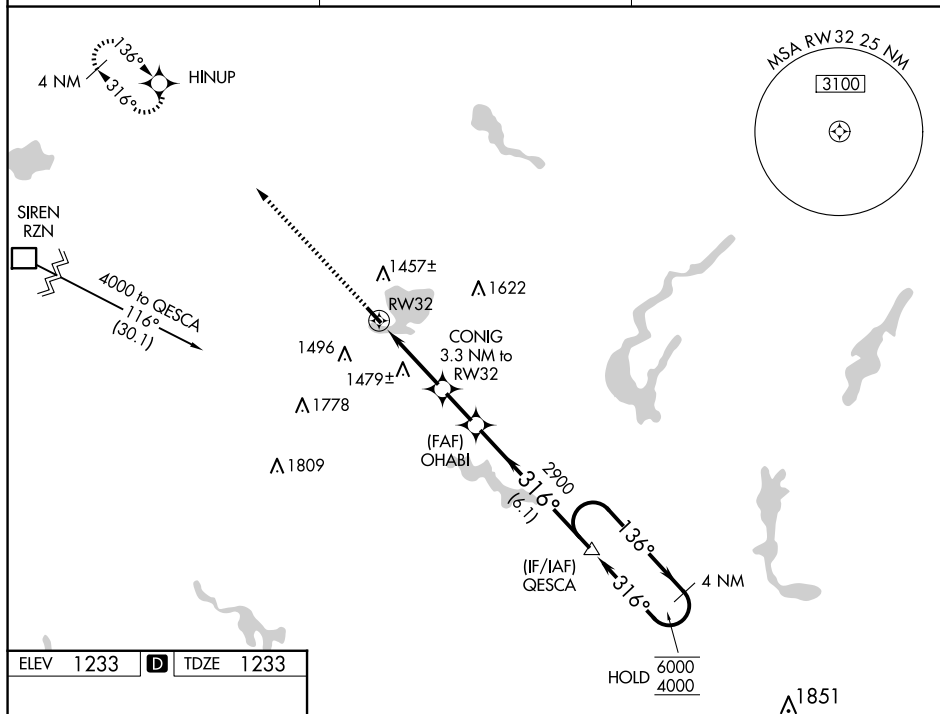
## SHELL LAKE MUNI (SSQ)

RNP APCH.

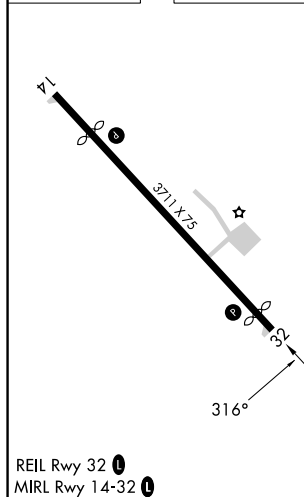
**T** Procedure NA at night. Rwy 32 helicopter visibility reduction below 1 SM NA.  
**A** NA Use Cumberland altimeter setting.

**MISSED APPROACH:** Climb to 4000 direct HINUP and hold.

UBE AWOS-3PT <b>119.175</b>	MINNEAPOLIS CENTER <b>126.45 276.4</b>	UNICOM <b>122.8 (CTAF) 0</b>
--------------------------------	---	---------------------------------



ELEV 1233	<b>D</b>	TDZE 1233
-----------	----------	-----------



4000 HINUP

VGSI and descent angles not coincident  
(VGSI Angle 3.00/TCH 23).

QESCA 4 NM Holding Pattern

CONIG 3.3 NM to RW32

OHABI

316°

302° TCH 40

2320 2900

3.3 NM 1.8 NM 6.1 NM

CATEGORY	A	B	C	D
RNAV MDA	1800-1 567 (600-1)		1800-1 $\frac{5}{8}$ 567 (600-1 $\frac{5}{8}$ )	1800-1 $\frac{3}{4}$ 567 (600-1 $\frac{3}{4}$ )
CIRCLING	1840-1 607 (700-1)		1840-1 $\frac{3}{4}$ 607 (700-1 $\frac{3}{4}$ )	2020-2 $\frac{1}{2}$ 787 (800-2 $\frac{1}{2}$ )

SHELL LAKE, WISCONSIN  
Orig-C 21APR22

45°44'N-91°55'W

SHELL LAKE MUNI (SSQ)  
RNAV (GPS) RWY 32

EC-3, 10 JUL 2025 to 07 AUG 2025

EC-3, 10 JUL 2025 to 07 AUG 2025