


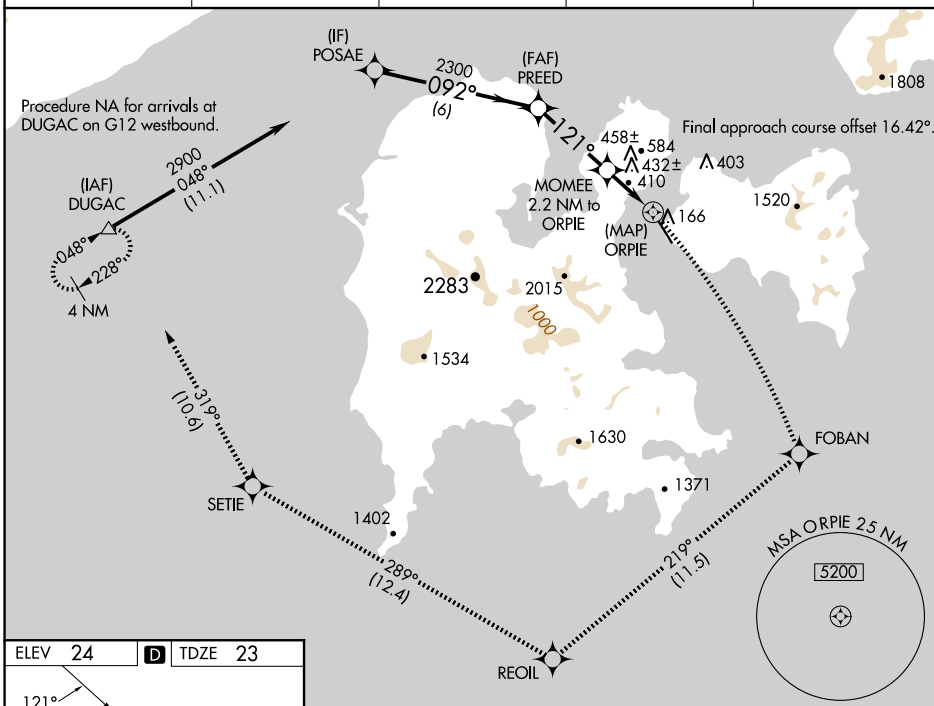
25051

RNAV (GPS) Z RWY 14
SAND POINT (SDP) (PASD)

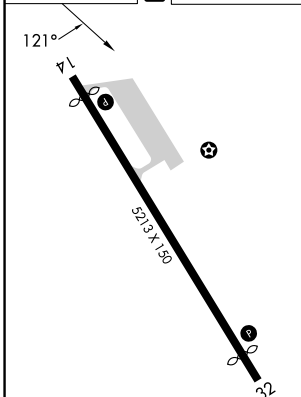
MISSED APPROACH: Climbing right turn to 5000 on the RNAV missed approach route to DUGAC and hold.

 Circling NA northeast of Rwy 14-32.

AWOS-3P 134.85	ANCHORAGE CENTER 125.35 346.3	CLNC DEL 122.3 (CTAF) 0	COLD BAY RADIO 122.3	UNICOM 122.8
--------------------------	---	--	--------------------------------	------------------------



ELEV 24	D	TDZE 23
---------	----------	---------



MIRL Rwy 14-32 **L**
REIL Rwy 14 and 32 **L**

POSAE		5000		FOBAN	tr 219°	REOIL	tr 289°	SETIE	tr 319°	DUGAC
		PREED								
		VGSi and descent angles not coincident (VGSi Angle 3.60/TCH 31).								
2900		092°		3.49° TCH 60		MOMEI 2.2 NM to ORPIE		1.1 NM to ORPIE		ORPIE
		2300		121°		1080				
		6 NM		3.3 NM		1.1 NM		1.1 NM		0.5 NM
CATEGORY		A		B		C				D
LP MDA		660-1		637 (700-1)		660-1¾		637 (700-1¾)		
LNAV MDA		820-1 797 (800-1)		820-1¼ 797 (800-1¼)		820-2½		797 (800-2½)		
CIRCLING		820-1 796 (800-1)		820-1¼ 796 (800-1¼)		1580-3 1556 (1600-3)		2240-3 2216 (2300-3)		

SAND POINT, ALASKA
Amdt 2 02DEC21

55°19'N-160°31'W

SAND POINT (SDP) (PASD)
RNAV (GPS) Z RWY 14

AK, 12 JUN 2025 to 07 AUG 2025