

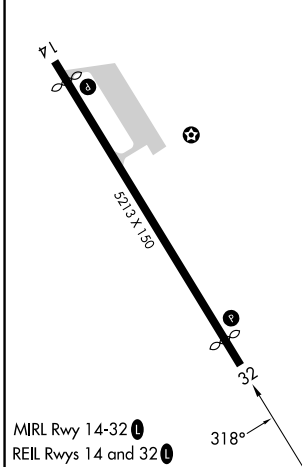
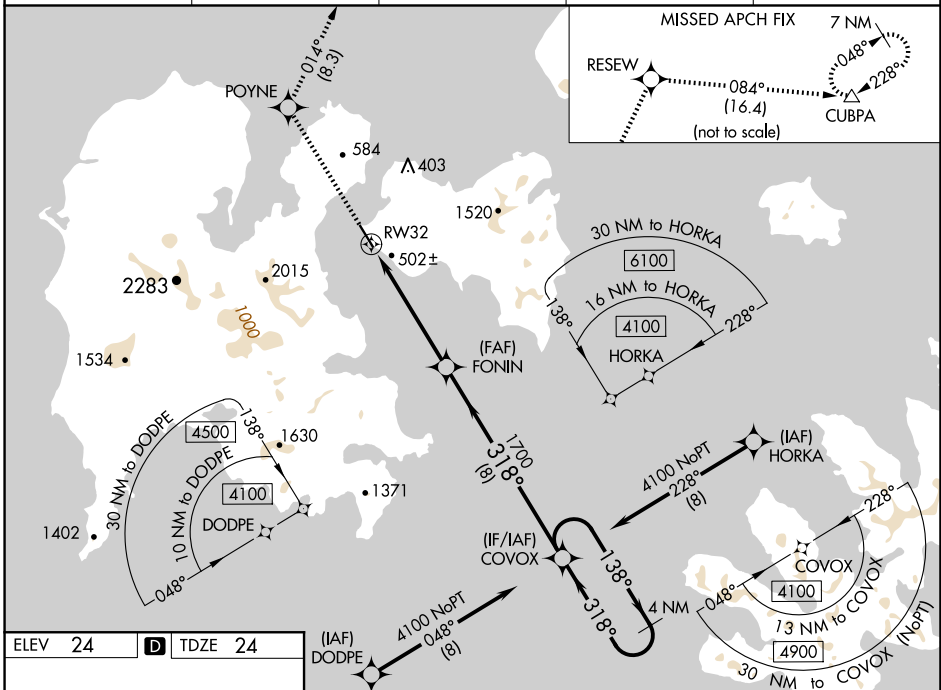
25051

RNAV (GPS) RWY 32

SAND POINT (SDP) (PASD)

MISSED APPROACH: Climb to 7000 direct POYNE and on track 014° to RESEW and on track 084° to CUBPA and hold. continue climb-in-hold to 7000.

AWOS-3P 134.85	ANCHORAGE CENTER 125.35 346.3	CLNC DEL 122.3 (CTAF) 0	COLD BAY RADIO 122.3	UNICOM 122.8
--------------------------	---	-----------------------------------	--------------------------------	------------------------



7000 ↑	POYNE ✱	tr 014° ✱	RESEW tr 084° ✱	CUBPA △	VGSI and RNAV glidepath not coincident (VGSI Angle 3.60/TCH 36).	COVOX 4 NM Holding Pattern	
* LNAV only		<p>Diagram details: The path starts at RW32 (indicated by a dashed line and arrow), curves, then proceeds straight. Key points and distances: 1.8 NM to RW32, 3.4 NM to FONIN (1700), 8 NM to COVOX. Angles: 318° at FONIN, 138° at COVOX. GP 3.00°, TCH 36.</p>					
CATEGORY	A		B		C		D
LPV DA			566-1½		542 (600-1½)		
LNAV/VNAV DA			859-2½		835 (900-2½)		
LNAV MDA	760-1 736 (800-1)		760-2 736 (800-2)				
CIRCLING	760-1 736 (800-1)		1520-3 1496 (1500-3)			NA	

SAND POINT (SDP) (PASD)
RNAV (GPS) RWY 32

AK, 12 JUN 2025 to 07 AUG 2025