

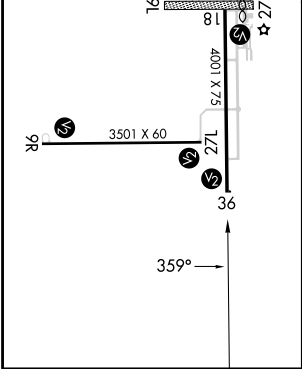
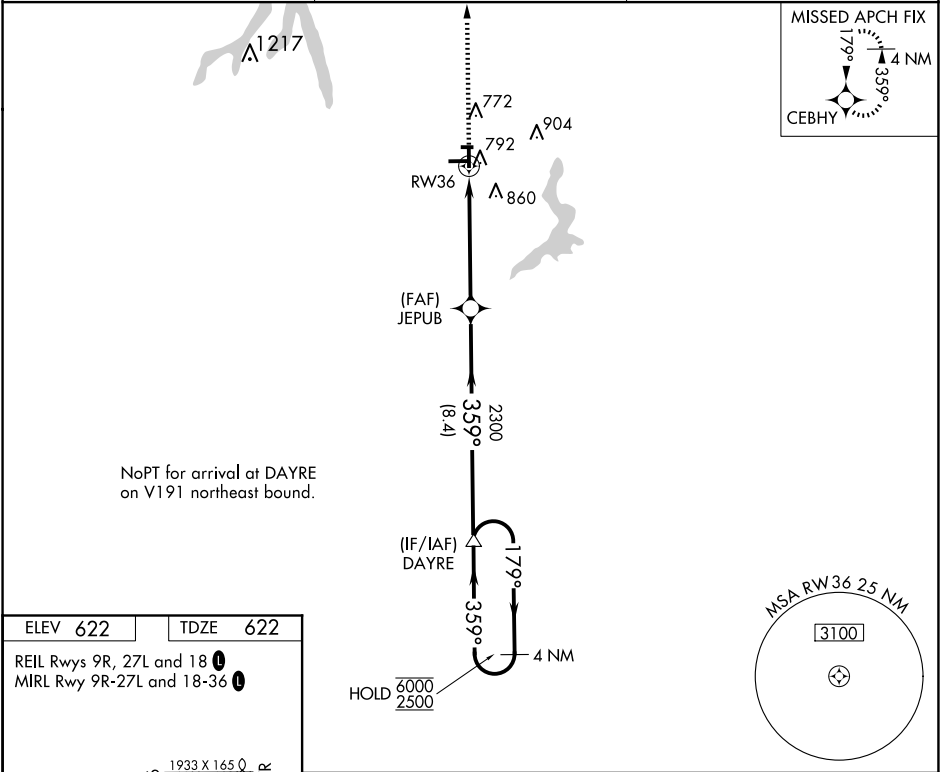
APP CRS	Rwy Idg	4001
359°	TDZE	622
	Apt Elev	622



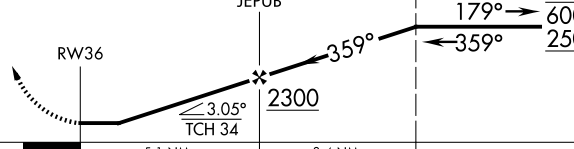
RNAV (GPS) RWY 36

TAYLORVILLE MUNI (TAZ)

RNP APCH - GPS.	<p>▼ ▲</p> <p>Rwy 36 helicopter visibility reduction below 1 SM NA. When VGSI inop, Circling Rwy 18 NA at night. Circling NA to Rwy 9L and 27R. When local altimeter setting not received, use Springfield altimeter setting and increase all MDAs 80 feet and LNAV visibility Cat C ¼ SM, and Circling visibility Cat C ¼ SM. LNAV MDA minimums NA at night.</p>	MISSED APPROACH: Climb to 2300 direct CEBHY and hold.
-----------------	---	--

AWOS-3PT 123.875	SAINT LOUIS APP CON ★ 126.15 323.0	UNICOM 122.8 (CTAF) 0
---------------------	---------------------------------------	--------------------------



2300	CEBHY				
					
					
CATEGORY	A	B	C	D	
LNAV MDA	1100-1	478 (500-1)	1100-1 ³ / ₈ 478 (500-1 ³ / ₈)	NA	
CIRCLING	1160-1	538 (600-1)	1260-1 ³ / ₄ 638 (700-1 ³ / ₄)	NA	