

WAAS CH 73022 W32A	APP CRS 327°	Rwy Idg 4600 TDZE 1145 Apt Elev 1145
--	------------------------	---

RNAV (GPS) RWY 32

NORTHWEST MISSOURI RGNL (EVU)

RNP APCH - GPS.

NA

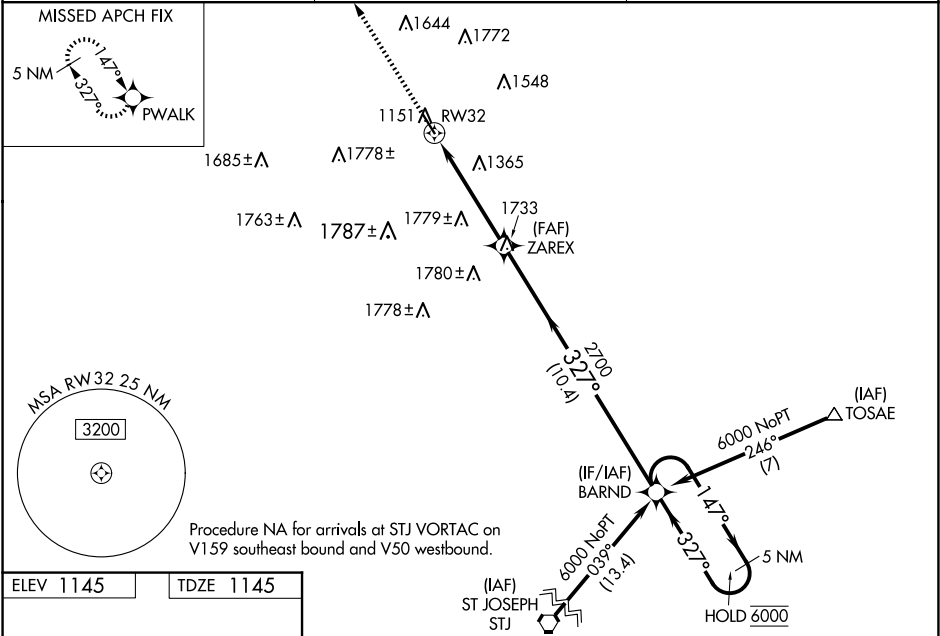
NA

NA

Circling NA east of Rwy 14-32. For uncompensated Baro-VNAV systems, LNAV/VNAV NA below -17°C or above 54°C. Rwy 32 helicopter visibility reduction below ¾ SM NA. When local altimeter setting not received, use St. Joseph altimeter setting: increase LPV DA to 1520 feet, LNAV/VNAV DA to 1653 feet and LNAV/VNAV visibility all Cats ¼ SM; increase all MDAs 140 feet and LNAV visibility Cat C ¾ SM. Baro-VNAV and VDP NA when using St. Joseph altimeter setting.

MISSED APPROACH: Climb to 5000 direct PWALK and hold, continue climb-in-hold to 5000.

AWOS-3PT 118.225	MINNEAPOLIS CENTER 119.6 290.4	UNICOM 122.8 (CTAF) 1
----------------------------	--	---------------------------------



ELEV 1145	TDZE 1145	5000 PWALK VGSI and RNAV glidepath not coincident (VGSI Angle 3.00/TCH 34).			
MIRL Rwy 14-32 1		REIL Rws 14 and 32 1			
CATEGORY		A	B	C	D
LPV DA		1 395-1 250 (300-1)			NA
LNAV/VNAV DA		1 528-1½ 383 (400-1½)			NA
LNAV MDA		1 620-1	475 (500-1)	1 620-1½ 475 (500-1½)	NA
CIRCLING		1 620-1	475 (500-1)	2 120-3 975 (1000-3)	NA