

WAAS CH <b>72807</b> <b>W14A</b>	APP CRS <b>147°</b>	Rwy Idg <b>4600</b> TDZE <b>1142</b> Apt Elev <b>1145</b>
--	------------------------	---

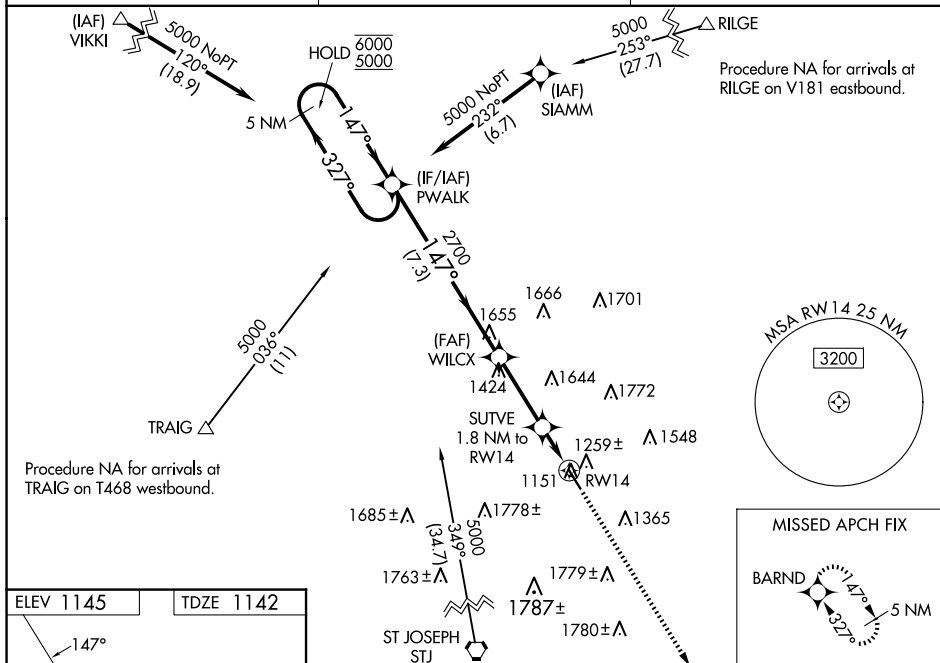
RNAV (GPS) RWY 14  
NORTHWEST MISSOURI RGNL (EVU)

RNP APCH - GPS.	
-----------------	--

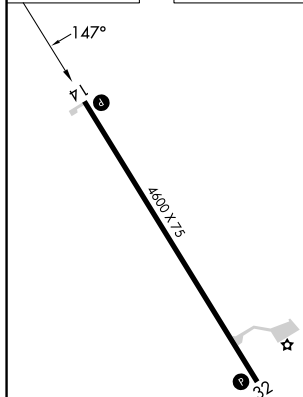
**NA** Circling NA east of Rwy 14-32. For uncompensated Baro-VNAV systems, LNAV/VNAV NA below -17°C or above 54°C. When local altimeter setting not received, use St. Joseph altimeter setting and increase LPV DA to 1517 feet, LNAV/VNAV DA to 1682 feet and all visibilities ½ SM. Increase all MDAs 140 feet, and LNAV visibility Cat C ¾ SM. Baro-VNAV and VDP NA when using St. Joseph altimeter setting.

**MISSED APPROACH:** Climb to 6000 direct BARND and hold, continue climb-in-hold to 6000.

AWOS-3PT <b>118.225</b>	MINNEAPOLIS CENTER <b>119.6 290.4</b>	UNICOM <b>122.8 (CTAF) 0</b>
----------------------------	--	---------------------------------



ELEV 1145		TDZE 1142
-----------	--	-----------

MIRL Rwy 14-32 **L**REIL Rwys 14 and 32 **L**

MARYVILLE, MISSOURI

Amdt 2 16MAY24

NORTHWEST MISSOURI RGNL (EVU)

RNAV (GPS) RWY 14

40°21'N-94°55'W

NC-3, 10 JUL 2025 to 07 AUG 2025

Diagram illustrating the WILCOX (WILCX) instrument approach procedure. The diagram shows a 5 NM Holding Pattern at 6000 ft, a 147° turn to 327°, a 147° turn to 2700 ft, a 1760 ft descent to 1760 ft, and a 1.1 NM turn to RW14. The diagram also shows the GP 3.00° TCH 40 and the VGS and RNAV glidepath not coincident (VGS Angle 3.00/TCH 34).