

WAAS CH 90527 W23A	APP CRS 229°	Rwy Idg TDZE 26 Apt Elev 26	5105
--	------------------------	---	-------------

RNAV (GPS) RWY 23

CAPE FEAR RGNL JETPORT/HOWIE FRANKLIN FLD (SU'T)

RNP APCH - GPS.

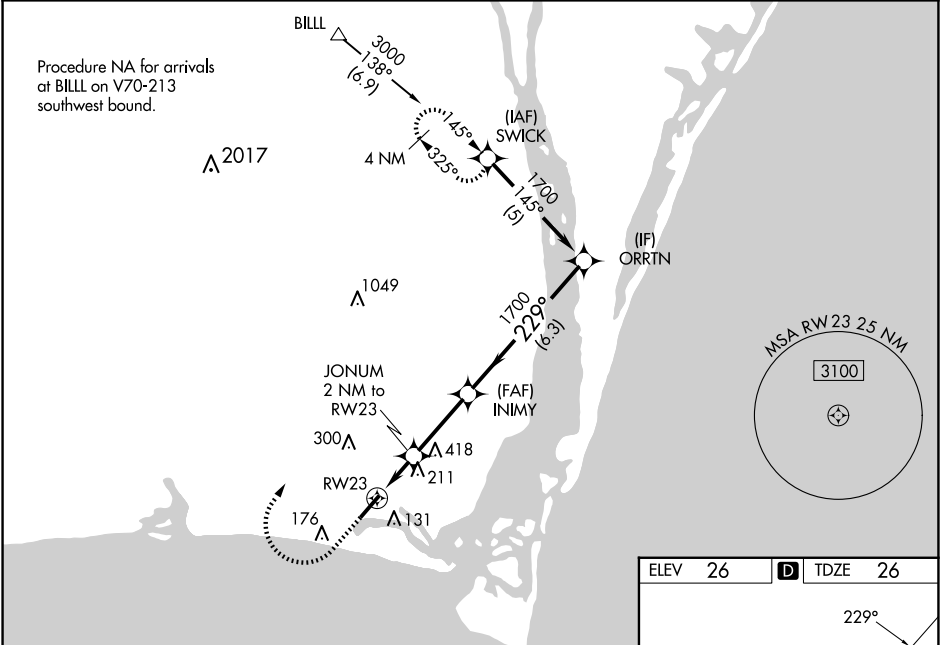
▼

Baro-VNAV NA when using Wilmington altimeter setting. For uncompensated Baro-VNAV systems, LNAV/VNAV NA below -15°C or above 54°C. When local altimeter setting not received, use Wilmington altimeter setting and increase LPV DA to 335 feet, increase LNAV/VNAV DA to 327 feet, increase all MDAs 60 feet and Circling visibility Cat C ¼ SM. Rwy 23 helicopter visibility reduction below ¾ SM NA. VDP NA when using Wilmington altimeter setting.

⚠

MISSED APPROACH: Climb to 500 then climbing right turn to 3000 direct SWICK and hold.

AWOS-3P 124.175	WILMINGTON APP CON ★ 118.25 284.65	UNICOM 123.05(CTAF) ①
---------------------------	--	---------------------------------



500

3000

SWICK

* LNAV only

RW23

JONUM 2 NM to RW23

INIMY 1700

ORRTN 1700

* 1 NM to RW23

* 720

GP 3.08° TCH 60

VGSI and RNAV glidepath not coincident (VGSI Angle 4.00/TCH 32).

1 NM

1 NM

2.9 NM

6.3 NM

CATEGORY	A	B	C	D
LPV DA	284-1	258 (300-1)		NA
LNAV/VNAV DA	276-1	250 (300-1)		NA
LNAV MDA	480-1	454 (500-1)	480-1 ¾ 454 (500-1 ¾)	NA
CIRCLING	480-1 454 (500-1)	520-1 494 (500-1)	720-2 694 (700-2)	NA

