

WAAS CH 72647 W35A	APP CRS 353°	Rwy Ldg TDZE 1547 Apt Elev 1551
--	------------------------	---

RNAV (GPS) RWY 35

WATONGA RGNL (JWG)

RNP APCH - GPS.

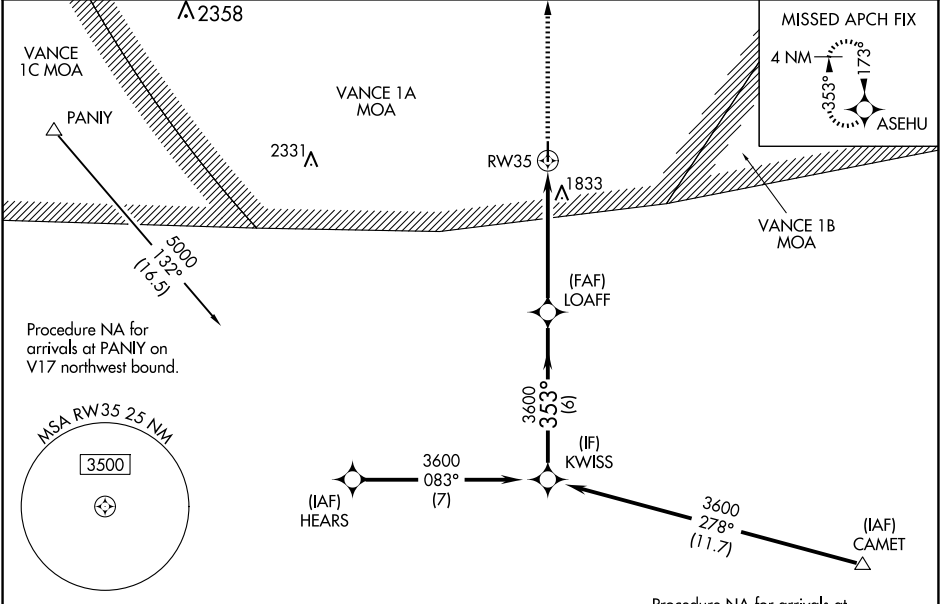
▼

▲

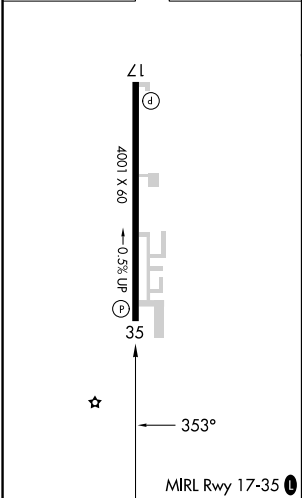
For uncompensated Baro-VNAV systems, LNAV/VNAV NA below -18°C or above 54°C. Baro-VNAV and VDP NA when using CLK altimeter setting. Rwy 35 helicopter visibility reduction below ¾ SM NA. When local altimeter setting not received, use CLK altimeter setting and increase LPV DA to 1903 feet and all visibilities ½ SM. Increase LNAV/VNAV DA to 2186 feet and all visibilities ½ SM. Increase all MDAs 100 feet and LNAV visibility Cat C ¼ SM, and Circling visibility Cat C ⅓ SM.







MISSED APPROACH: Climb to 4000 direct ASEHU and hold.

AWOS-3 134.175	VANCE APP CON ★ 126.75 346.325	UNICOM 122.8 (CTAF) 0
--------------------------	--	---------------------------------



ELEV 1551	TDZE 1547
------------------	------------------



4000 ASEHU		LOAFF			KWISS		
							
							
1.4 NM to RW35		3600			353°		3600
1.4 NM		4 NM			6 NM		GP 3.50° TCH 46
CATEGORY	A	B	C	D			
LPV DA	1817-7/8	270 (300-7/8)		NA			
LNAV/VNAV DA	2100-15/8	553 (600-15/8)		NA			
LNAV MDA	2100-1	553 (600-1)	2100-15/8 553 (600-15/8)	NA			
CIRCLING	2100-1 549 (600-1)	2140-1 589 (600-1)	2140-15/8 589 (600-15/8)	NA			