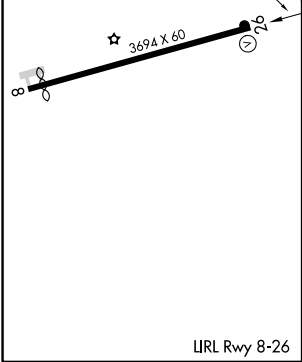
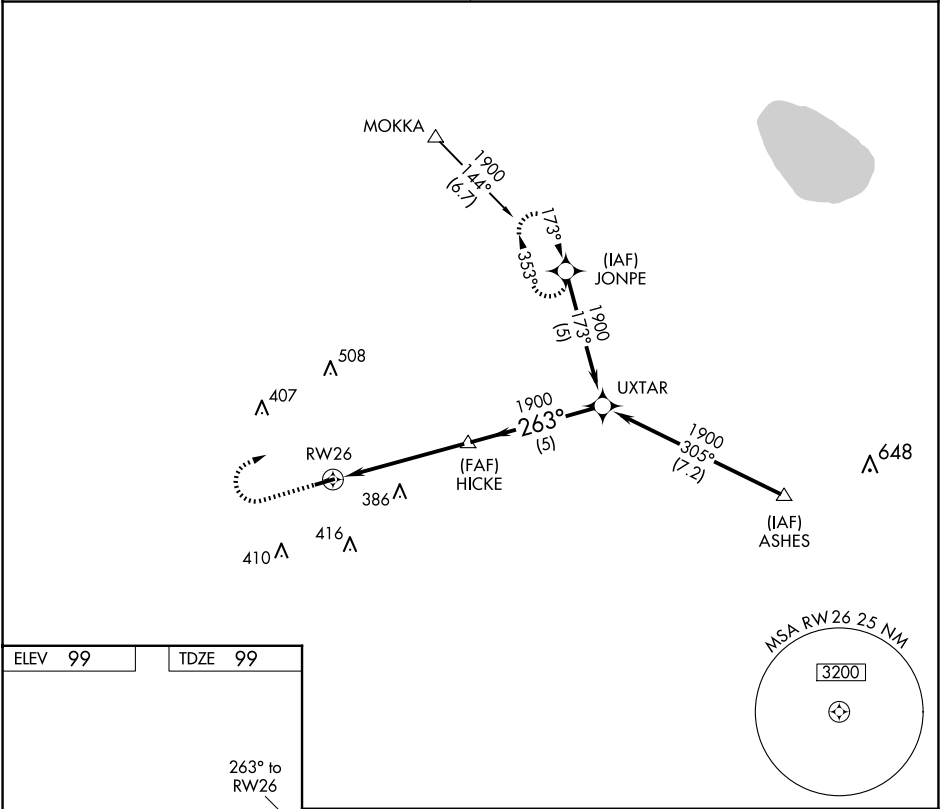


APP CRS	Rwy Idg	3694
263°	TDZE	99
	Apt Elev	99

GPS RWY 26  
TWIN CITY (5J9)

<div><div>▼</div><div>▲ NA</div></div> <div>Use Myrtle Beach Intl altimeter setting. Procedure NA at night. Helicopter visibility below 1 SM NA.</div>	MISSED APPROACH: Climb to 1000 then climbing right turn to 1700 direct JONPE WP and hold.
--	---

MYRTLE BEACH APP CON ★ 119.2 350.3	CTAF 122.9
---------------------------------------	---------------



	1000	1700	JONPE	
	<div>↑</div>	<div>↶</div>	<div>✧</div>	
			HICKE	UXTAR
			1900	1900
			263°	Procedure Turn NA
			3.33° TCH 34	
			5 NM	5 NM
CATEGORY	A	B	C	D
S-26	540-1	441 (500-1)	NA	NA
CIRCLING	600-1	501 (600-1)	NA	NA