

WAAS CH 60929 W29A	APP CRS 289°	Rwy Idg TDZE Apt Elev	6000 308 310
--	------------------------	-----------------------------	---

RNAV (GPS) RWY 29

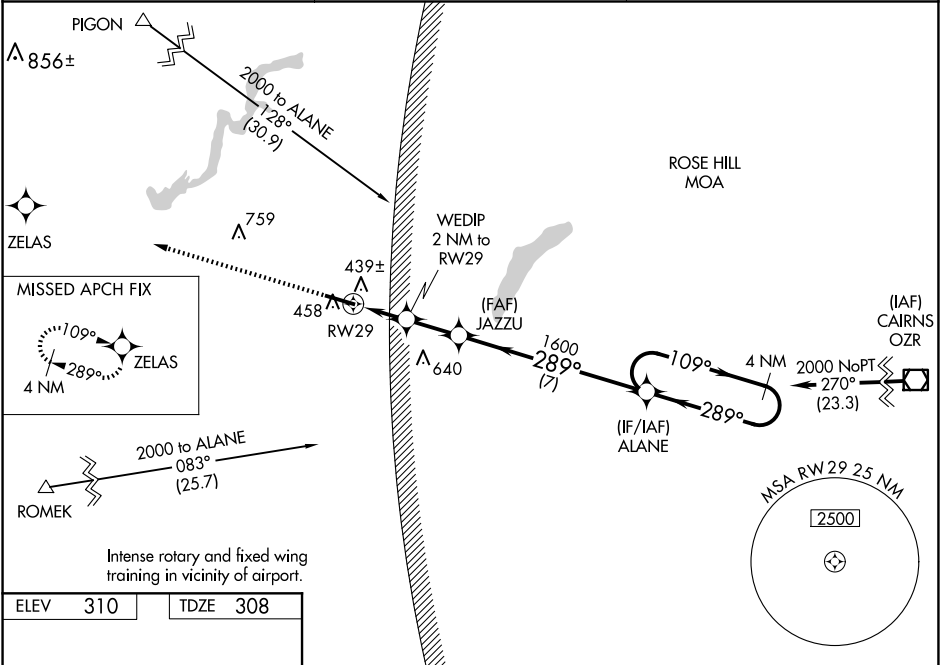
SOUTH ALABAMA RGNL AT BILL BENTON FLD (79J)

⚠

For uncompensated Baro-VNAV systems, LNAV/VNAV NA below -15°C (5°F) or above 54°C (130°F). DME/DME RNP-0.3 NA. Helicopter visibility reduction below ¼ SM NA. When local altimeter setting not received, use Cairns AAF (Fort Novosel) altimeter setting and increase all DA 82 feet, all MDA 100 feet. Increase LPV and LNAV/VNAV visibilities ¾ mile, LNAV and Circling Cat C and D ¼ mile. Baro-VNAV and VDP NA when using Cairns AAF (Fort Novosel) altimeter setting.

MISSED APPROACH: Climb to 2500 direct ZELAS and hold.

ASOS 134.875	CAIRNS APP CON ★ 133.45 239.275	UNICOM 122.8 (CTAF) 0
------------------------	---	---------------------------------



ELEV 310 TDZE 308

2500

ZELAS

VGSI and RNAV glidepath not coincident (VGSI Angle 3.50/TCH 47).

WEDIP 2 NM to RW29

JAZZU 1600

ALANE 2000

109°

289°

109°

4 NM Holding Pattern

*LNAV only

1 NM to RW29

1600

980*

GP 3.00°

TCH 45

CATEGORY	A	B	C	D
LPV DA	630-1 322 (400-1)			
LNAV/VNAV DA	628-1 320 (400-1)			
LNAV MDA	720-1 412 (500-1)	720-1½ 412 (500-1½)		
CIRCLING	820-1 510 (600-1)	860-1½ 550 (600-1½)	940-2 630 (700-2)	