

WAAS CH <b>82600</b> <b>W11A</b>	APP CRS <b>109°</b>	Rwy Idg <b>6000</b> TDZE <b>310</b> Apt Elev <b>310</b>
--	------------------------	---

## RNAV (GPS) RWY 11

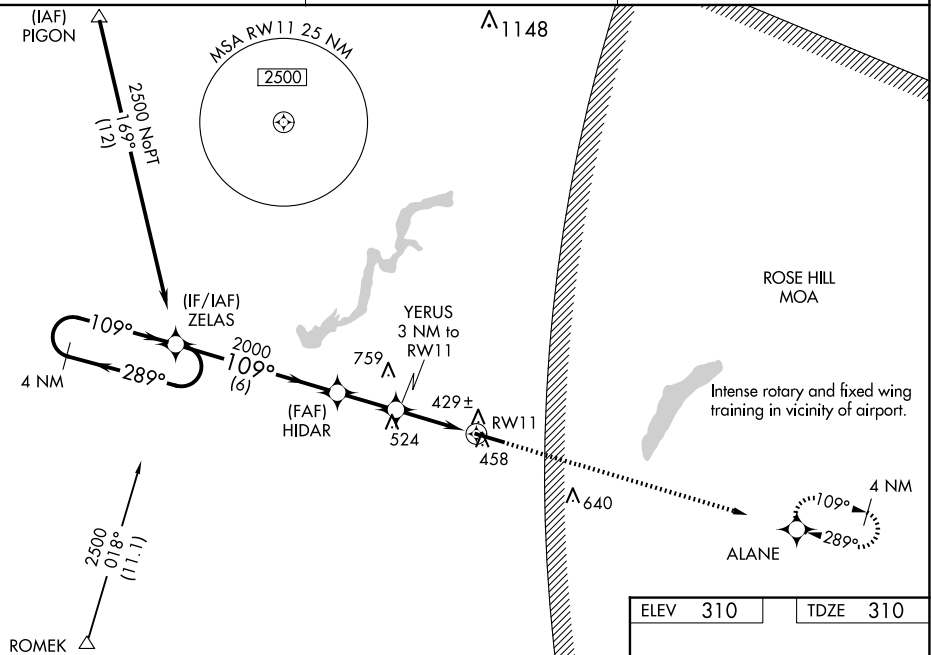
SOUTH ALABAMA RGNL AT BILL BENTON FLD (79J)

**⚠** For uncompensated Baro-VNAV systems, LNAV/VNAV NA below -15°C (5°F) or above 54°C (130°F), DME/DME RNP-0.3 NA. Helicopter visibility reduction below ½ SM NA. When local altimeter setting not received, use Coirns AAF (Fort Novosel) altimeter setting and increase all DA 82 feet, all MDA 100 feet. Increase all LPV and LNAV/VNAV visibilities ⅓ mile all Cats, LNAV and Circling Cats C and D ¼ mile. Baro-VNAV and VDP NA when using Coirns AAF (Fort Novosel) altimeter setting.

**MISSED APPROACH:** Climb to 2000 direct ALANE and hold.

ASOS  
134.875

CAIRNS APP CON ★  
133.45 239.275

UNICOM  
122.8 (CTAF) **L**

4 NM Holding Pattern ZELAS

VGS1 and RNAV glidepath not coincident (VGS1 Angle 3.00/TCH 33).

2000

289°

109°

109°

HIDAR 2000

YERUS 3 NM to RW11

\*1.3 NM to RW11

RW11

GP 3.00° TCH 40

\*2000

\*1300

6 NM

2.2 NM

1.7

1.3

2000

ALAN

\*LNAV only

CATEGORY	A	B	C	D
LPV DA	615-1 305 (400-1)			
LNAV/ VNAV DA	655-1½ 345 (400-1½)			
LNAV MDA	760-1 450 (500-1)		760-1¾ 450 (500-1¾)	
CIRCLING	820-1 510 (600-1)		860-1½ 550 (600-1½)	940-2 630 (700-2)

ELEV 310

TDZE 310

109°

6000 X 100

29

MRL Rwy 11-29

REIL Rwy 11 and 29

## RNAV (GPS) RWY 11