

APP CRS  
**132°**

Rwy Idg  
TDZE  
**1206**

**3401**  
Apt Elev  
**1206**

**RNAV (GPS) RWY 13**

EMMETSBURG MUNI (E/GQ)

RNP APCH-GPS.

▼

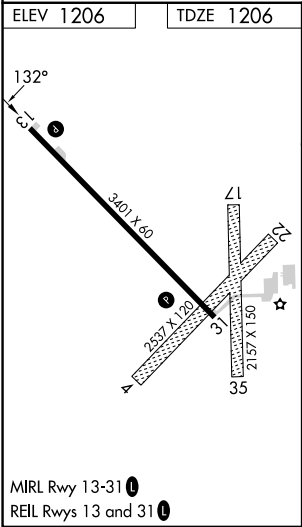
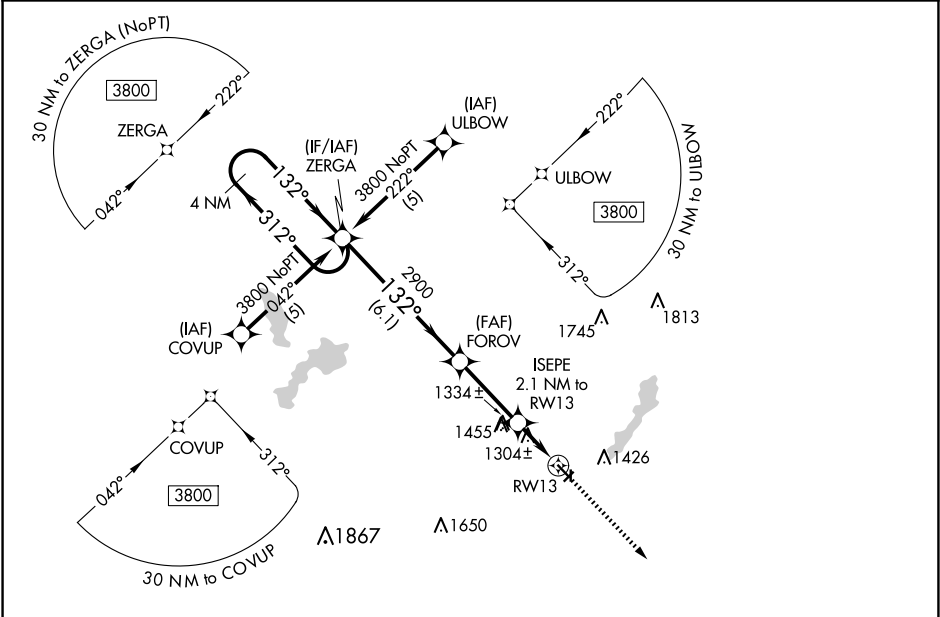
▲ NA

Use Algona altimeter setting, when not received, use Estherville altimeter setting. Procedure NA at night. Circling NA to Rwy's 4, 17, 22 and 35. Rwy 13 helicopter visibility reduction below 1 SM NA.

MISSED APPROACH: Climb to 3800 direct HIVEN and hold.

MINNEAPOLIS CENTER  
**127.75 257.7**

UNICOM  
**122.8 (CTAF) 0**



VGSIs and descent angles not coincident (VGSIs Angle 4.00/TCH 54).			
4 NM Holding Pattern		3800 HIVEN	
ZERGA		FOROV	
ISEPE 2.1 NM to RWY 13		RWY 13	
3800 ← 312°		2900	
132° →		1900	
132°		3.04° TCH 40	
6.1 NM		3 NM	
2.1 NM			
CATEGORY	A	B	C
LNNAV MDA	1620-1	414 (500-1)	NA
CIRCLING	1780-1	1840-1	NA
	574 (600-1)	635 (700-1)	