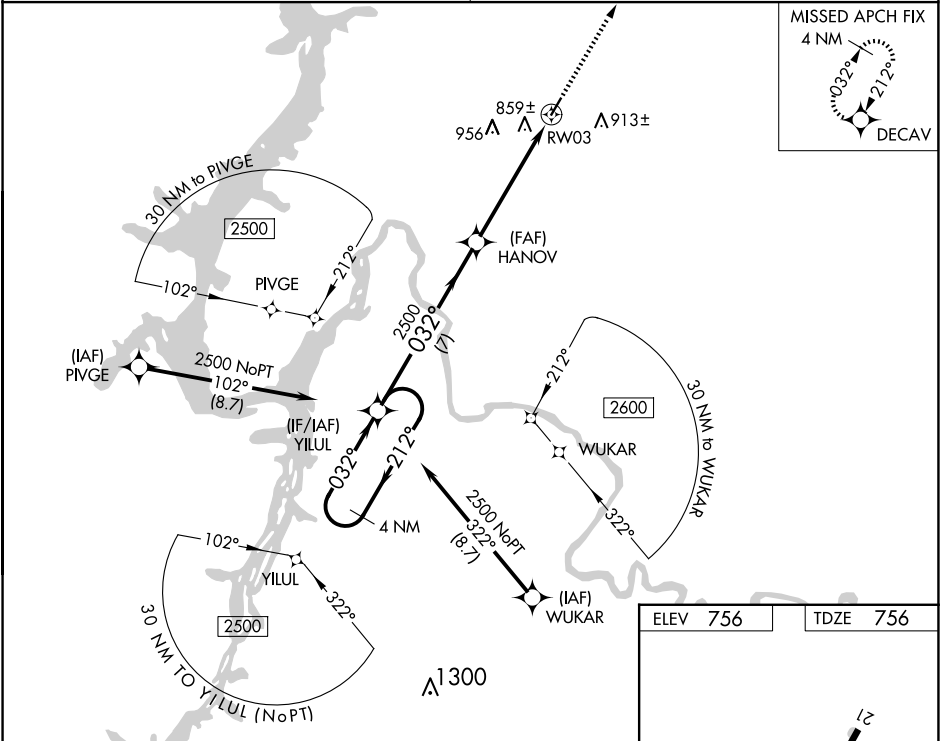


WAAS CH 90222 W03A	APP CRS 032°	Rwy Idg TDZE Apt Elev	4000 756 756
--	------------------------	-----------------------------	---

RNAV (GPS) RWY 3
HUMPHREYS COUNTY (ØM5)

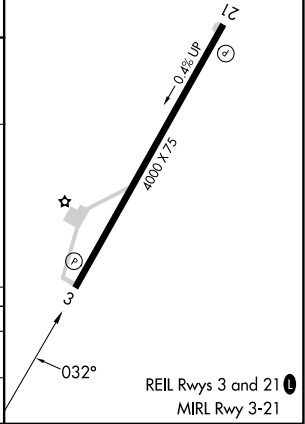
RNP APCH. <div><div>▼</div><div>▲ NA</div></div> <div>When local altimeter setting not received, use Nashville Intl altimeter setting and increase all MDA 160 feet; increase LP Cat C and D visibility 3/8 mile, LNAV Cat C and D visibility 1/2 mile. Procedure NA at night. Rwy 3 helicopter visibility reduction below 1 SM NA.</div>	MISSED APPROACH: Climb to 2700 direct DECAV and hold.
--	---

MEMPHIS CENTER 125.85 379.25	UNICOM 122.8 (CTAF) 0
--	---------------------------------



ELEV 756	TDZE 756
----------	----------

Visual Segment - Obstacles.				2700	DECAV
4 NM Holding Pattern				↑	✦
2500 ← 212° 032° → 2500				RWY 3	
7 NM 5.3 NM					
CATEGORY	A	B	C	D	
LP MDA		1100-1	344 (400-1)		
LNAV MDA		1120-1	364 (400-1)		



SE-1, 10 JUL 2025 to 07 AUG 2025

SE-1, 10 JUL 2025 to 07 AUG 2025