

WAVERLY, TENNESSEE

AL-6522 (FAA)

23222

WAAS CH <b>97422</b> <b>W21A</b>	APP CRS <b>212°</b>	Rwy Idg <b>4000</b> TDZE <b>755</b> Apt Elev <b>756</b>
--	------------------------	---

# RNAV (GPS) RWY 21

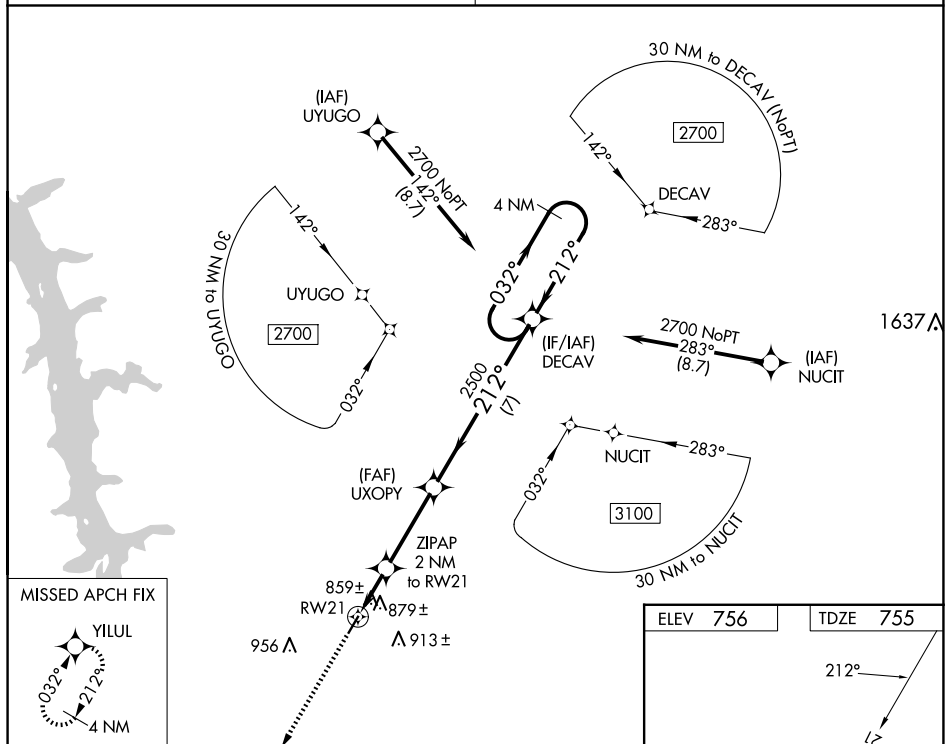
RNP APCH.



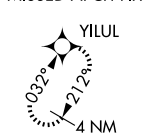
When local altimeter setting not received, use Nashville Intl altimeter setting:  
increase all MDA 160 feet and visibility Cat C and D ½ SM.  
Procedure NA at night. Rwy 21 helicopter visibility reduction below 1 SM NA.

**MISSED APPROACH:** Climb to 2500 direct YILUL and hold.

MEMPHIS CENTER  
125.85 379.25

UNICOM  
122.8 (CTAF) **L**

## MISSED APCH FIX



2500



VIII



Figure 1 illustrates a sample flight profile. The profile begins with a climb to 1420 feet, followed by a turn to a heading of 212 degrees. The flight path continues past the UXOPY waypoint, where another turn to 032 degrees is indicated. The profile concludes with a 4 NM holding pattern. Key altitudes (2500, 2700, 2500) and horizontal distance markers (2 NM, 3.4 NM, 7 NM) are provided. A table in the top left corner defines symbols: an upward arrow for 2500 and a four-pointed star for YILUL.

CATEGORY	A	B	C	D
LP MDA	1120-1 365 (400-1)			
LNAV MDA	1140-1 385 (400-1)		1140-1½ 385 (400-1½)	

ELEV 756 TDZE 755

212°

0.4% UP

4000 X 75

2

3

REIL Rwys 3 and 21 **L**

MRL Rwy 3-21

WAVERLY, TENNESSEE  
Orig-C 05NOV20

36°07'N-87°44'W

HUMPHREYS COUNTY (ØM5)  
RNAV (GPS) RWY 21

SE-1, 10 JUL 2025 to 07 AUG 2025