

APP CRS	Rwy Idg	4211
040°	TDZE	4174
	Apt Elev	4174

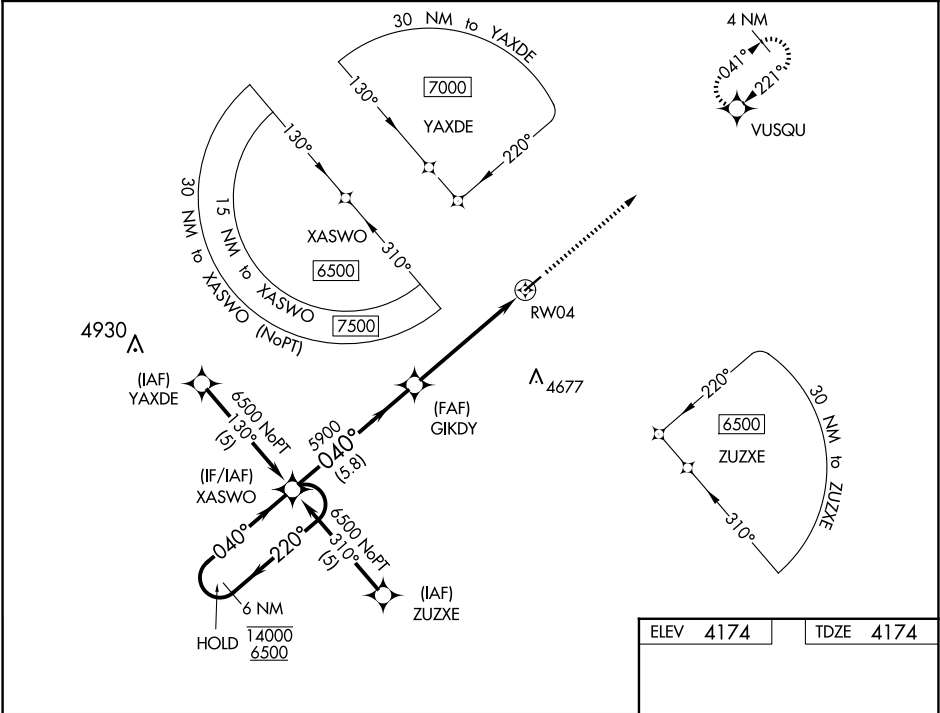
RNAV (GPS) RWY 4
BOISE CITY (17K)

RNP APCH.

▼ Rwy 4 helicopter visibility reduction below 1 SM NA. Straight-in Rwy 4 NA at night, Circling Rwy 4 NA at night. Use Dalhart, TX altimeter setting; when not received, procedure NA.

MISSED APPROACH: Climb to 6000 direct VUSQU and hold.

DHT ASOS 134.075	ALBUQUERQUE CENTER 127.85 285.475	CTAF 122.90
----------------------------	---	-----------------------



ELEV 4174	TDZE 4174
-----------	-----------

6 NM Holding Pattern

XASWO

14000

6500

← 220°

040° →

Visual Segment - Obstacles

6000

↑

VUSQU

✦

GIKDY

5900

✖

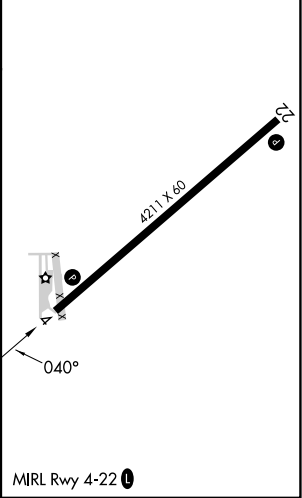
RW04

040°

5.8 NM

5.2 NM

CATEGORY	A		B	C	D
RNAV MDA	4860-1	686 (700-1)		4860-2 686 (700-2)	NA
C CIRCLING	4860-1	686 (700-1)		5040-2½ 866 (900-2½)	NA



SC-1, 10 JUL 2025 to 07 AUG 2025

SC-1, 10 JUL 2025 to 07 AUG 2025