

WAAS CH <b>42706</b> <b>W31A</b>	APP CRS <b>315°</b>	Rwy Idg <b>5400</b> TDZE <b>1076</b> Apt Elev <b>1076</b>
--	------------------------	---

RNAV (GPS) RWY 31  
WARROAD INTL MEML (RRT)

RNP APCH.



Circling NA to Rwy's 4 and 22. For uncompensated Baro-VNAV systems, LNAV/VNAV NA below -17°C or above 54°C. For inop ALS increase LNAV/VNAV all Cats visibility to 1 SM and LNAV Cat C/D visibility to 1½ SM.

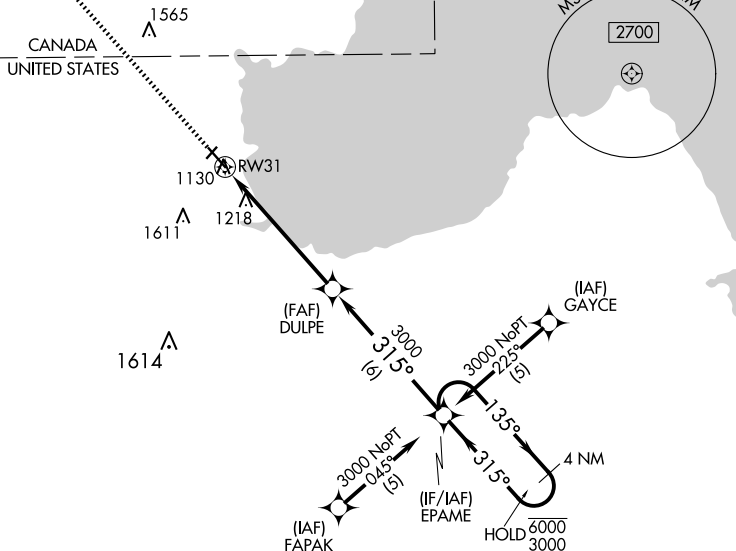
MALSR



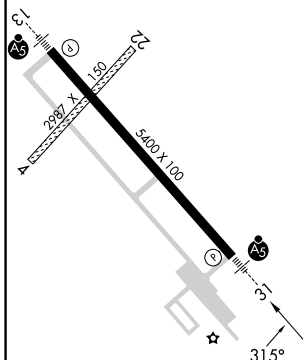
MISSED APPROACH: Climb to 3000  
direct HAPKO and hold.

AWOS-3 <b>119.925</b>	MINNEAPOLIS CENTER <b>134.75 251.1</b>	GCO <b>121.725</b>	UNICOM <b>123.05</b> (CTAF) <b>0</b>
--------------------------	---	-----------------------	---

MISSED APCH FIX



ELEV 1076		TDZE 1076
-----------	--	-----------

HIRL Rwy 13-31 **L**

WARROAD, MINNESOTA

Orig-B 10SEP20

48°56'N-95°21'W

WARROAD INTL MEML (R.R.T)  
RNAV (GPS) RWY 31