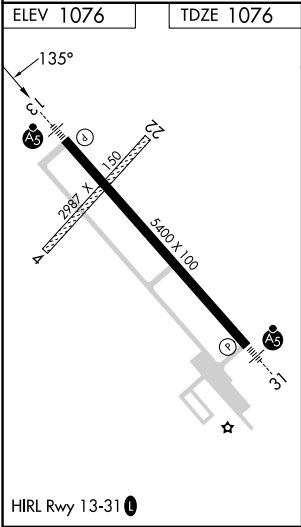
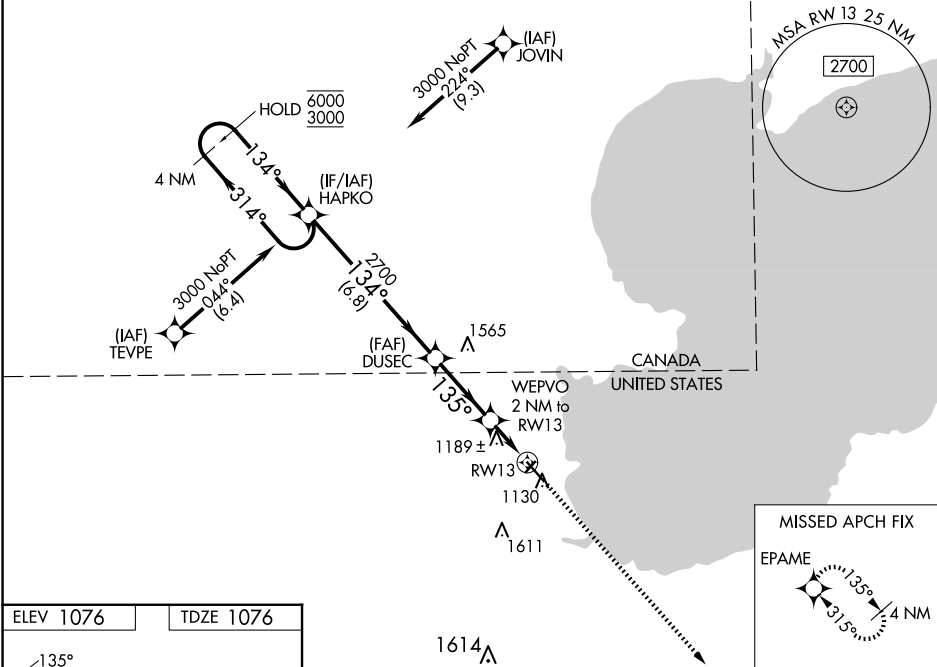


WAAS CH 69437 W13A	APP CRS 135°	Rwy Idg TDZE Apt Elev	5400 1076 1076
--	------------------------	-----------------------------	---

RNAV (GPS) RWY 13
WARROAD INTL MEML (R.R.T)

RNP APCH.		MALSR	MISSED APPROACH: Climb to 3000 direct EPAME and hold.
AWOS-3 119.925		MINNEAPOLIS CENTER 134.75 251.1	GCO 121.725
		UNICOM 123.05 (CTAF) 0	



4 NM Holding Pattern		VGSi and RNAV glidepath not coincident (VGSi Angle 3.00/TCH 29).		3000	EPAME
HAPKO		DUSEC		*LNAV only	
6000 ← 314°		2700		*1.1 NM to RWY13	
3000 → 134°		135°		RWY13	
GP 3.00°		*1740		1.1	
TCH 45		6.8 NM		3 NM	
				0.9 NM	
CATEGORY	A	B	C	D	
LPV DA	1276-¾ 200 (200-¾)				
LNNAV/VNAV DA	1365-1 289 (300-1)				
LNNAV MDA	1440-1 364 (400-1)				
CIRCLING	1500-1 424 (500-1)	1540-1 464 (500-1)	1960-2¾ 884 (900-2¾)	1960-3 884 (900-3)	

NC-1, 10 JUL 2025 to 07 AUG 2025

NC-1, 10 JUL 2025 to 07 AUG 2025