

APP CRS  
347°

Rwy ldg  
TDZE  
Apt Elev

N/A  
N/A  
2491

RNAV (GPS)-B  
HENDERSON EXEC (HND)

RNP APCH-GPS.

⚠

Circling to Rwy 35L NA at night. Rwy 35L helicopter visibility reduction below 1 SM NA. When local altimeter setting not received, use Harry Reid Intl altimeter setting and increase all MDAs 60 feet.

MISSED APPROACH: Climbing right turn to 7000 direct JUVNO and hold, continue climb-in-hold to 7000.

ATIS  
120.775

LAS VEGAS APP CON  
125.475 307.25

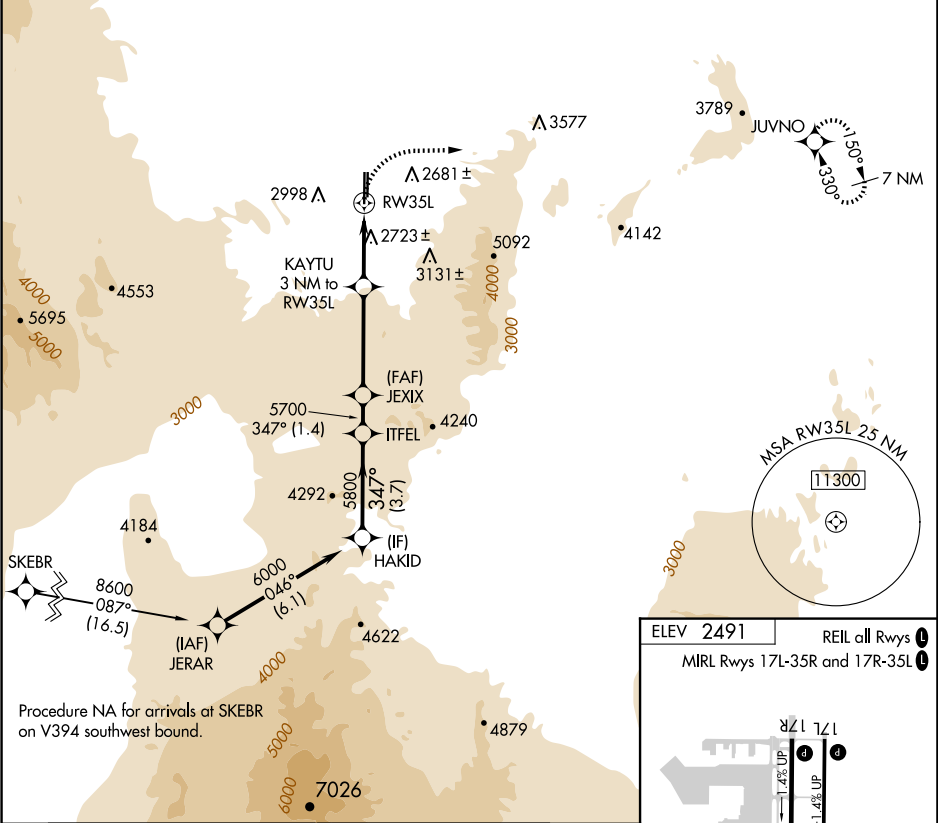
HENDERSON TOWER★  
125.1 (CTAF) 0

GND CON  
127.8

CLNC DEL  
118.425

CLNC DEL  
125.475  
(when twr closed)

UNICOM  
122.95



HAKID

ITFEL

JEXIX

KAYTU 3 NM to RW35L

RW35L

7000

JUVNO

6000

5800

5700

4620

347°

6.50°

TCH 52

3.7 NM

1.4 NM

3.9 NM

3 NM

CATEGORY	A	B	C	D
CIRCLING	3880-1¼ 1389 (1400-1¼)	3880-1½ 1389 (1400-1½)	3880-3 1389 (1400-3)	NA

ELEV 2491

REIL all Rwys

MIRL Rwys 17L-35R and 17R-35L

TWR

35L

35R

4° UP

1.4° UP

5001 X 75

6501 X 100

347°