

WAAS CH <b>86244</b> <b>W06A</b>	APP CRS <b>058°</b>	Rwy ldg TDZE Apt Elev	<b>5500</b> <b>2402</b> <b>2419</b>
--	------------------------	-----------------------------	---

RNAV (GPS) RWY 6R

RYAN FLD (RYN)

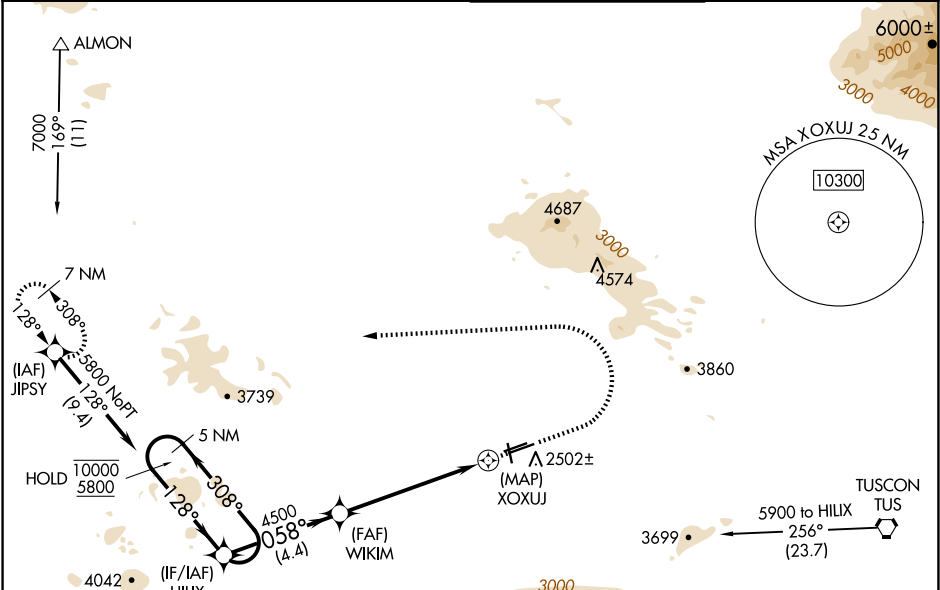
RNP APCH - GPS.

⚠

Circling NA for Cat D north of Rwy 24R and east of Rwy 15.  
Rwy 6R helicopter visibility reduction below ¾ SM NA.  
For uncompensated Baro-VNAV systems, LNAV/VNAV  
NA below -19°C or above 54°C.

MISSED APPROACH: Max 240K until JIPSY.  
Climb to 2900 then climbing left turn to  
7000 direct JIPSY and hold.  
Continue climb-in-hold to 7000.

ATIS <b>133.35</b>	TUSCON APP CON <b>128.5 273.6</b>	RYAN TOWER★ <b>125.8 (CTAF) 0</b>	GND CON <b>118.2</b>
-----------------------	--------------------------------------	--------------------------------------	-------------------------



5 NM Holding Pattern

10000

5800

← 308°

→ 128°

058°

4500

GP 3.00°

TCH 50

4.4 NM

4.8 NM

0.8

0.8

HILIX

WIKIM

4500

4500

XOXUJ

2900

7000

JIPSY

\*1.6 NM to RWY 6R

\*LNAV only

CATEGORY	A	B	C	D
LPV DA	2675-7/8		273 (300-7/8)	
LNAV/VNAV DA	2756-1		354 (400-1)	
LNAV MDA	2960-1	558 (600-1)	2960-1 5/8	558 (600-1 5/8)
CIRCLING	2960-1	541 (600-1)	3040-1 3/4 621 (700-1 3/4)	3320-3 901 (1000-3)

ELEV 2419

TDZE 2402

51

6R

0.835 UP

33

4900 X 75

5500 X 75

4010 X 75

TWR 2484

24L

058°

MIRL Rwy 6L-24R

REIL Rwy 6R and 6L

MIRL Rwy 6R-24L and 15-33