

WAAS
CH **45722**
W11A

APP CRS
110°

Rwy Idg **4876**
TDZE **854**
Apt Elev **871**

RNAV (GPS) RWY 11

LEBANON SPRINGFIELD-GEORGE HOERTER FLD (6I2)

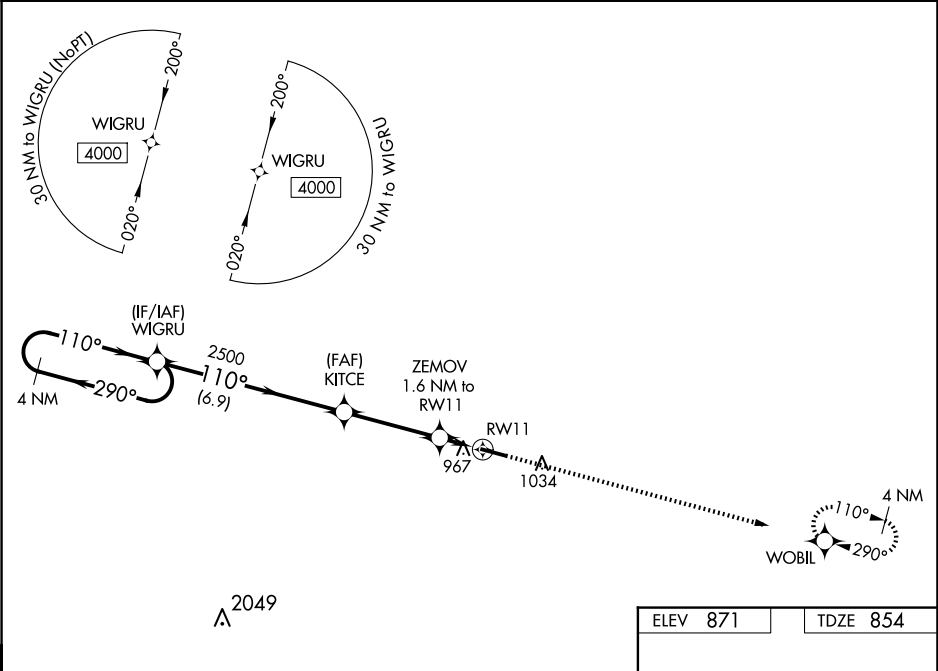
▼

▲

For uncompensated Baro-VNAV systems, LNAV/VNAV NA below -16°C or above 54°C.
When local altimeter setting not received, use Danville altimeter setting and increase all DA 74 feet and all MDA 80 feet. Increase LPV, LNAV/VNAV, and Circling Cat D visibility ¼ mile and LNAV Cats C/D ⅓ mile. Baro-VNAV NA when using Danville altimeter setting.

MISSED APPROACH: Climb to 4000 direct WOBIL and hold, continue climb-in-hold to 4000.

AWOS-3P 119.725	LOUISVILLE APP CON 132.075 327.0	UNICOM 122.8 (CTAF) 0
---------------------------	--	---------------------------------



4 NM Holding Pattern WIGRU

4000

GP 3.00° TCH 36

2500

KITCE 2500

ZEMOV 1.6 NM to RW11

RW11

4000 WOBIL

*LNAV only

110°

1.0° UP → 5001 X 75

CATEGORY	A	B	C	D
LPV DA		1104-1	250 (300-1)	
LNAV/VNAV DA		1159-1⅓	305 (300-1⅓)	
LNAV MDA		1220-1	366 (400-1)	
CIRCLING	1320-1 449 (500-1)	1340-1 469 (500-1)	1360-1½ 489 (500-1½)	1500-2 629 (700-2)

MRL Rwy 11-29 0
REIL Rwys 11 and 29 0