

APP CRS	Rwy Idg	3400
277°	TDZE	1237
	Apt Elev	1238

RNAV (GPS) RWY 28

NEILLSVILLE MUNI (VIQ)

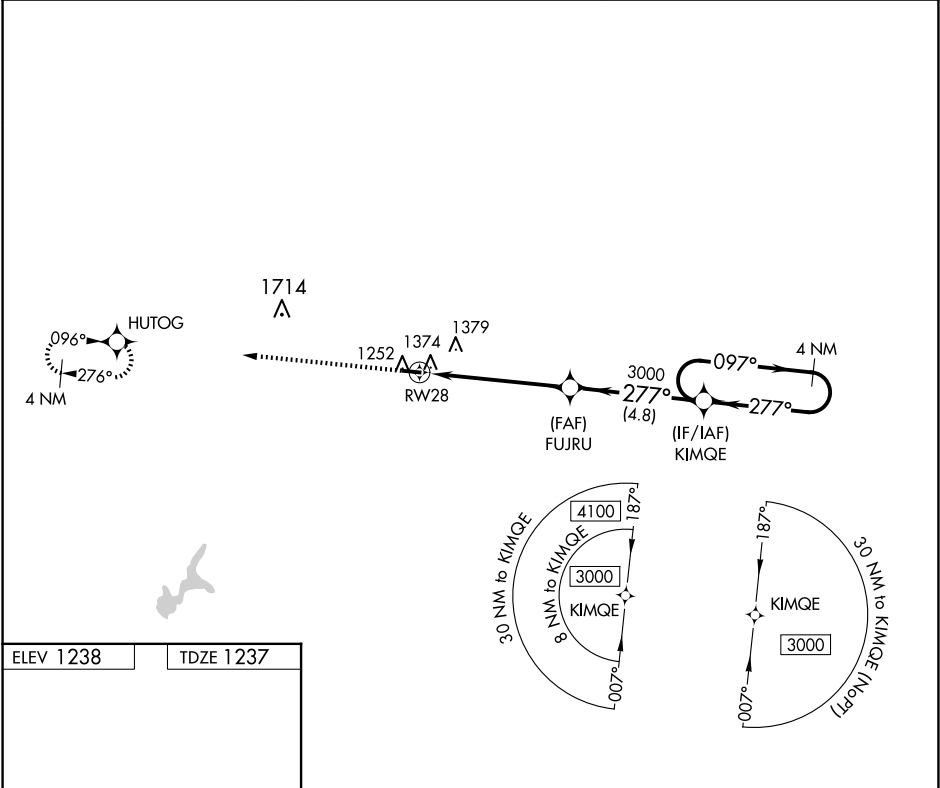
RNP APCH.

▼ Rwy 28 helicopter visibility reduction below 3/4 SM NA. Use Marshfield altimeter setting; when not received, use Wisconsin Rapids altimeter setting and increase all MDA 80 feet.

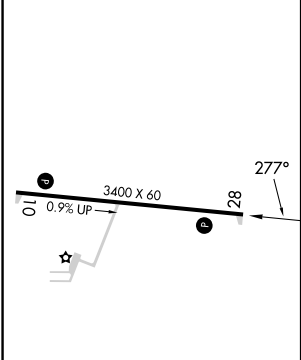
▲ NA





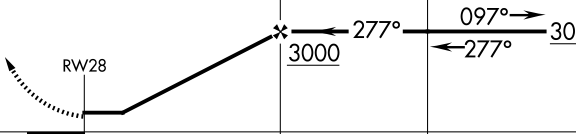
MISSED APPROACH:
Climb to 3000 direct
HUTOG and hold.

MFI ASOS 121.575	MINNEAPOLIS CENTER 124.4 317.7	UNICOM 122.8 (CTAF) U
---------------------	-----------------------------------	---------------------------------



ELEV 1238	TDZE 1237
-----------	-----------



<div>3000 ↑</div> <div>HUTOG </div>		Visual Segment - Obstacles.		4 NM Holding Pattern	
<div>RW28 </div>		<div>FUJRU </div>		<div>KIMQE </div>	
					
CATEGORY	A	B	C	D	
LNAV MDA	1680-1 443 (500-1)			NA	
CIRCLING	1720-1 482 (500-1)			NA	