

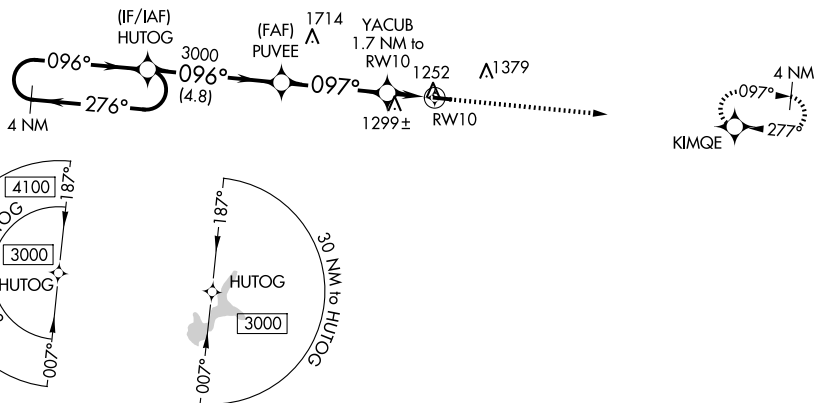
WAAS CH 90131 W10A	APP CRS 097°	Rwy Idg 3400 TDZE 1236 Apt Elev 1238
----------------------------------------	------------------------	-----------------------------------------------------------------

RNAV (GPS) RWY 10
NEILLSVILLE MUNI (VIQ)

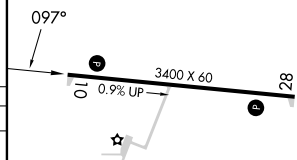
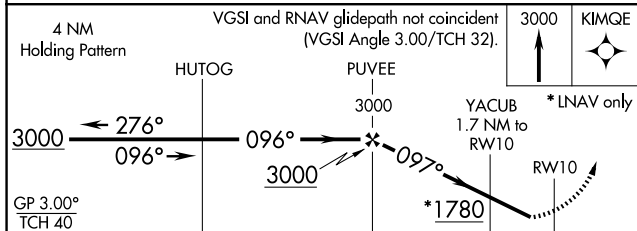
T Baro-VNAV NA. DME/DME RNP-0.3 NA. Helicopter visibility reduction below $\frac{3}{4}$ SM
A NA. Use Marshfield altimeter setting; when not received, use Wisconsin Rapids altimeter
 NA setting and increase all DA 63 feet and all MDA 80 feet. Increase LPV and LNAV/VNAV
 Cuts A/B visibility $\frac{1}{4}$ mile.

MISSED APPROACH: Climb to 3000 direct KIMQE and hold.

MFI ASOS 121.575	MINNEAPOLIS CENTER 124.4 317.7	UNICOM 122.8 (CTAF) 0
----------------------------	------------------------------------------	---------------------------------



ELEV 1238		TDZE 1236
-----------	--	-----------



CATEGORY	A	B	C	D
LPV DA	1526-1	290 (300-1)	NA	
LNAV/ VNAV DA	1526-1	290 (300-1)	NA	
LNAV MDA	1600-1	364 (400-1)	NA	
CIRCLING	1720-1	482 (500-1)	NA	

LIRL Rwy 10-28 **L**